

Fixed Attenuator

- ◆ DC to 6 GHz
- ◆ 9 dB
- ◆ 2 Watt
- ◆ SMA Stainless Steel Connectors

Features

- High attenuation accuracy
- Small VSWR
- Stainless Steel
- Ceramic chip
- Low cost-high performance

Specifications

Frequency Range	DC to 6 GHz
Attenuation	9 dB
Attenuation Accuracy (Max.)	±0.6 dB over DC – 6 GHz

Nominal Impedance	50 Ohm
Average Power	2 Watt
Operating Temperature	-55 °C to +125°C
Storage Temperature	-55 °C to +125°C

Model No. Description

FATXXXXXX

- X- Material: (no code)=Brass
(S)=Stainless steel
- X- power handling: 2W or 5W.
- X- connector type: SMA, N type or SMB connector.
- XX- attenuation: **dB.
- XX- 06 represents type number.

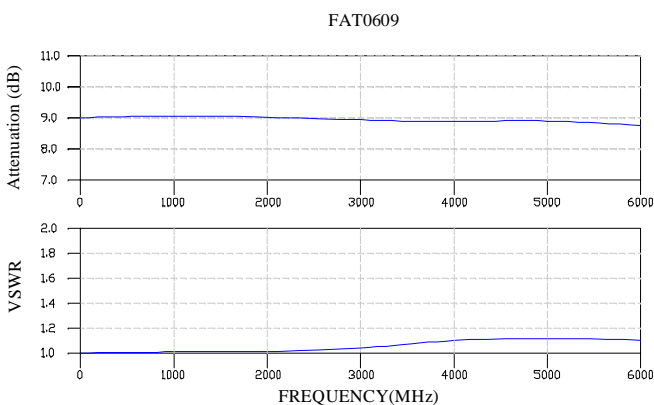
FREQ. RANGE (GHz)	Typical VSWR(:1)	Maximum VSWR(:1)
DC to 3	1.10	
3 to 4	1.15	
4 to 6	1.20	
DC to 6		1.30

Material & Plating

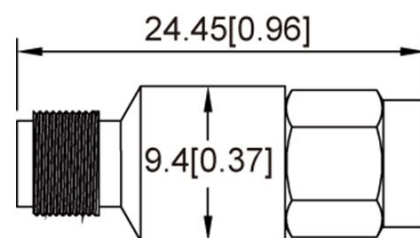
Parts	Material	Plating(Micro-inch)
Body & Nut	Stainless Steel	Passivated
Contact (female & male)	Beryllium Copper	Gold 30
Insulator	Teflon	

Characteristic

For example the testing curves of FAT0609S2S



Package Outlines



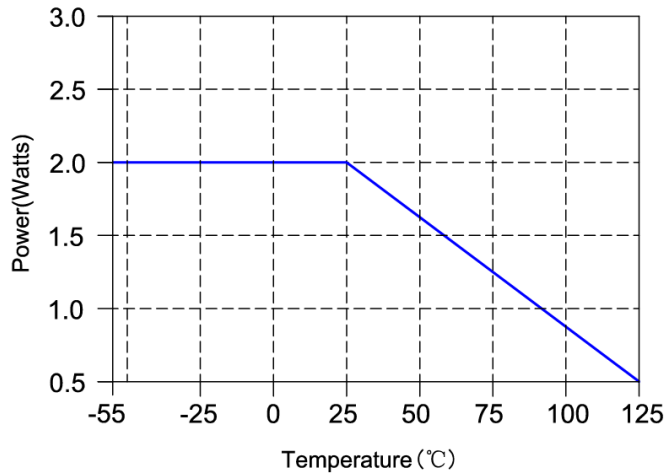
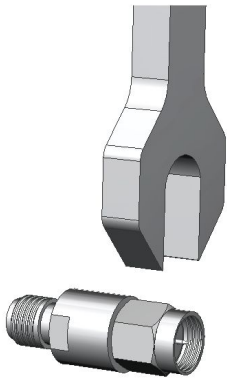
Package type: SMA

Note: all dimensions shown in mm & inch

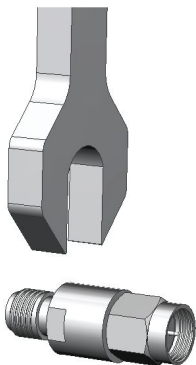
Yantel Corporation

Add: 3F, Building 3, Southern District 2 of Zhongguan Honghualing Industrial Park, Xili, Nanshan, Shenzhen, China
Tel: 86-755-8355-1886 Fax: 86-755-8355-2533

For detailed performance specs & shopping online see Yantel web site : www.yantel-corp.com

Note:**Average power at 25°C ambient, derate linearly to 0.5W at 125°C****Attention**

Screw the male of connector to connect/disconnect.



Don't screw the slot of body to connect/disconnect.