

Data Sheet

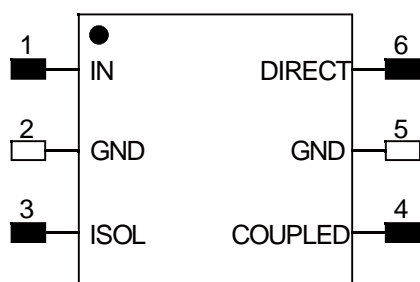
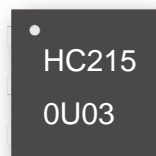
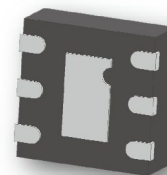
HC2150U03-040

90 Degree Hybrid
2.05 GHz-2.25 GHz



Features

- Small Size (2x2mm)
- Very Low Loss
- Tight Amplitude Balance
- High Isolation
- Low VSWR
- Good Repeatability
- Tape & Reel
- Power handling
 - 4 Watts as a divider
 - 2 Watts as a combiner



TOP VIEW

Applications

- Phase shifter / Attenuator
- Balanced amplifier / LNA configurations
- Modulators
- Mixers
- Power combining /dividing

Notes:

1. Require to add Capacitors of DC Blocker between Pins(with black color) and external circuit to prevent DC signal entry to guranteeparts normal work.
2. This part has passed through 100% RF test.

Electrical Specifications at 25° C

| Parameter | Symbol | Min | Typ | Max | Unit |
|----------------------------|------------------|------|------|------|------|
| Frequency Range | F | 2050 | | 2250 | MHz |
| Insertion Loss (Above 3dB) | I _L | | 0.25 | 0.35 | dB |
| Isolation | Isol | 27 | 30 | | dB |
| Phase balance | ∅ _{bal} | | 1.0 | 1.5 | deg |
| Amplitude balance | A _{bal} | | 0.5 | 0.85 | dB |
| Return Loss | R _L | 24 | 28 | | dB |

Yantel Corporation

Add: 3F, Building 3, Southern District 2 of Zhongguan Honghualing Industrial Park, Xili, Nanshan, Shenzhen, China
Tel: 86-755-8355-1886 Fax: 86-755-8355-2533

Rev A3

For detailed performance specs & shopping online see Yantel web site : www.yantel-corp.com

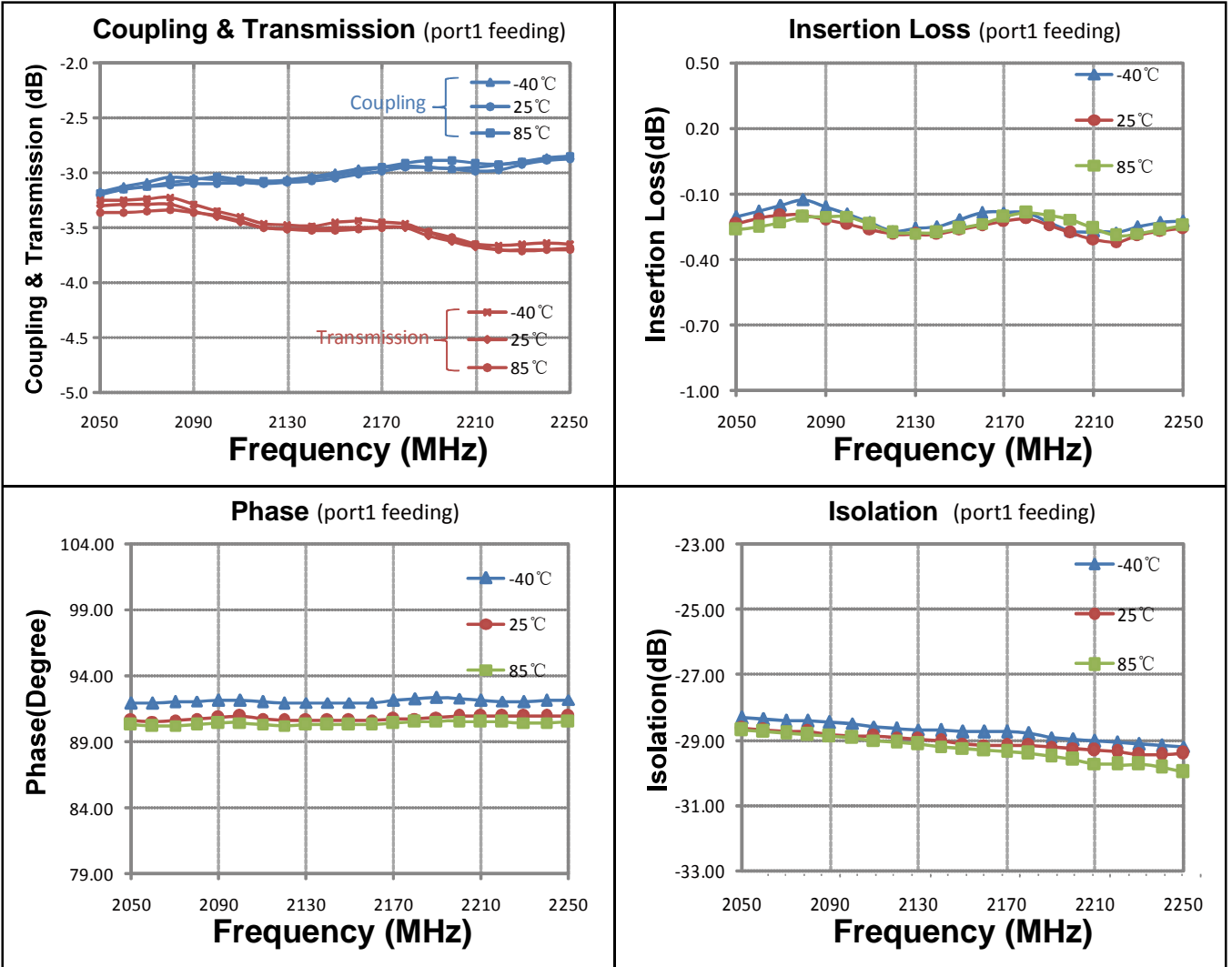
Data Sheet

HC2150U03-040

90 Degree Hybrid
2.05 GHz-2.25 GHz



Typical Performance (-40°C, 25°C, 85°C: 2.05-2.25 GHz)



Yantel Corporation

Add: 3F, Building 3, Southern District 2 of Zhongguan Honghualing Industrial Park, Xili, Nanshan, Shenzhen, China
Tel: 86-755-8355-1886 Fax: 86-755-8355-2533

Rev A3

For detailed performance specs & shopping online see Yantel web site : www.yantel-corp.com

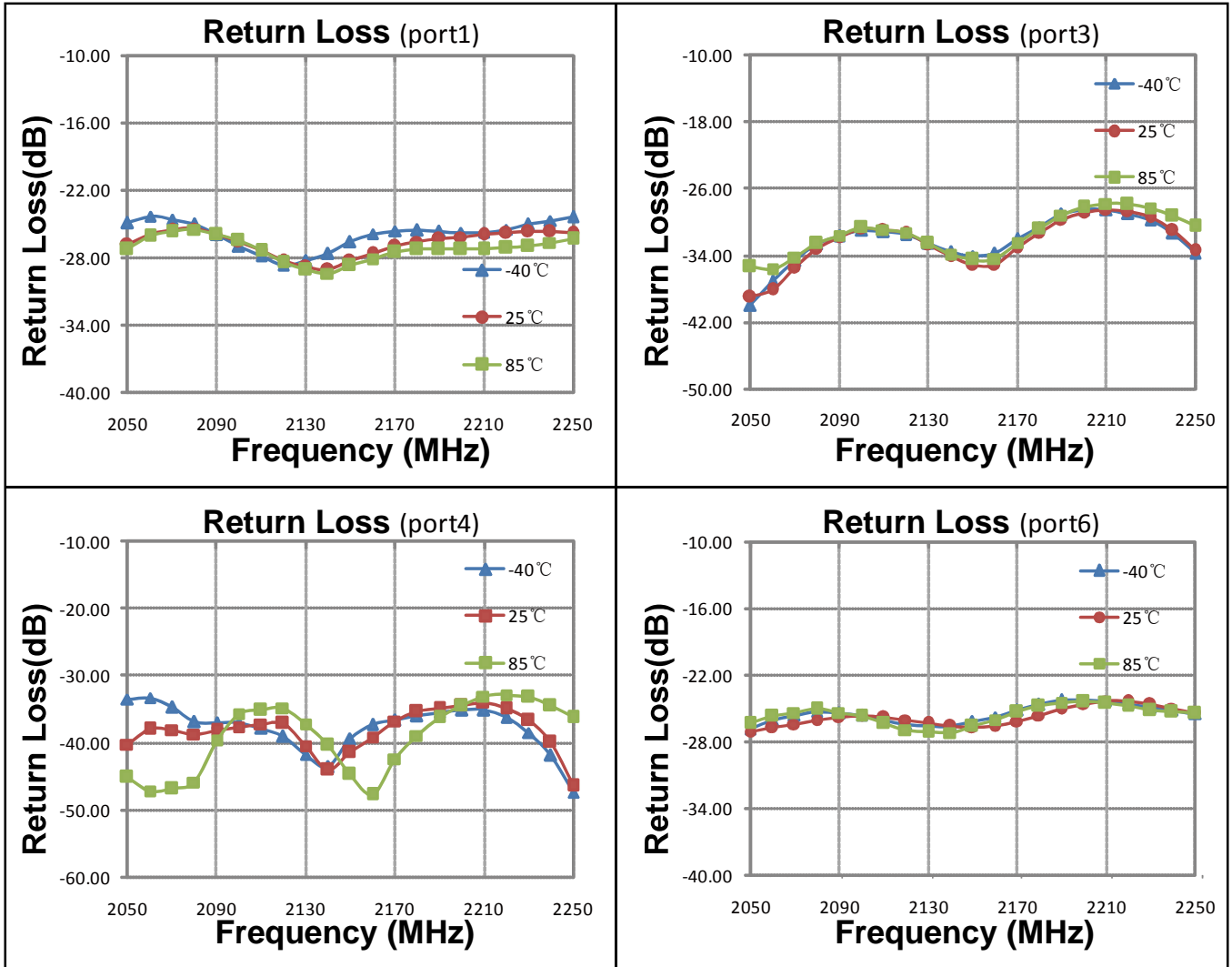
Data Sheet

HC2150U03-040

90 Degree Hybrid
2.05 GHz-2.25 GHz



Typical Performance (-40°C, 25°C, 85°C: 2.05-2.25 GHz)



Yantel Corporation

Add: 3F, Building 3, Southern District 2 of Zhongguan Honghualing Industrial Park, Xili, Nanshan, Shenzhen, China
Tel: 86-755-8355-1886 Fax: 86-755-8355-2533

Rev A3

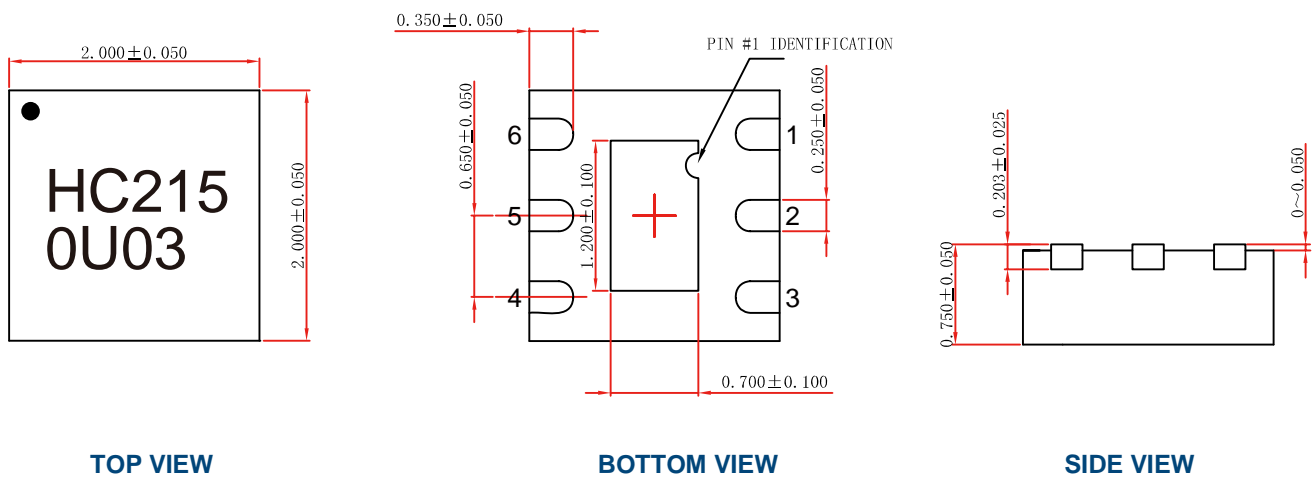
For detailed performance specs & shopping online see Yantel web site : www.yantel-corp.com

Data Sheet HC2150U03-040

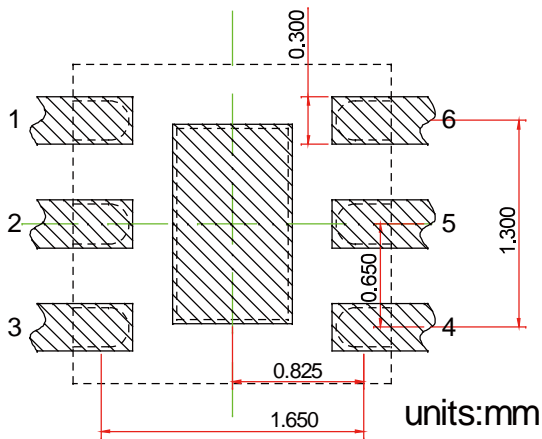
90 Degree Hybrid
2.05 GHz-2.25 GHz



Outline Drawing



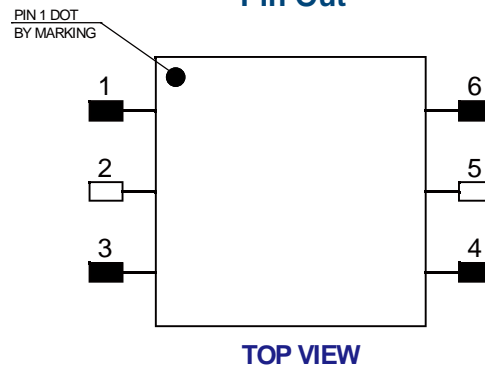
Land Pattern



Recommended Land Pattern Top View

Notes: All dimensions show in millimeters

Pin Out



Notes:

1. Require to add Capacitors of DC Blocker between Pins (with black color) and external circuit to prevent DC signal entry to guarantee parts normal work.
2. This part has passed through 100% RF test.

| Pin # | Connection |
|-------|------------|
| 1 | IN |
| 2 | GND |
| 3 | ISOL |
| 4 | COUPLED |
| 5 | GND |
| 6 | DIRECT |

Yantel Corporation

Add: 3F, Building 3, Southern District 2 of Zhongguan Honghualing Industrial Park, Xili, Nanshan, Shenzhen, China
 Tel: 86-755-8355-1886 Fax: 86-755-8355-2533

Rev A3

For detailed performance specs & shopping online see Yantel web site : www.yantel-corp.com