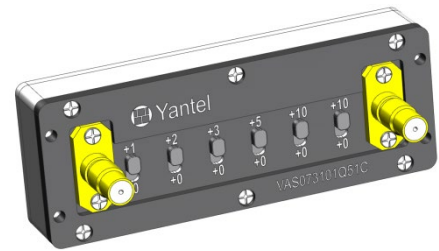


Manual Step Attenuator

- ◆ DC to 4.2GHz
- ◆ 0 to 35dB in 1dB Step
- ◆ 5 Watt
- ◆ Choice of QMA Type Connectors



Features

- Using advanced microstrip technology, ultra-small size
- Attenuation values are adjustable in a power-on state, no sudden big reflection.
It adopts an innovative technology, and thus it eliminates sudden big reflection in attenuators when attenuation is being adjusted, preventing the preliminary RF circuit from being burnt, and keeping the system stable
- Step attenuation: 1dB, 2dB, 3dB, 5dB, 10dB, 10dB,
- 31 attenuation values
- High attenuation accuracy, low insertion loss
- High adjustment accuracy
- Low cost – High Performance
- Adjusting the transmitting (receiving) distance of RF signal precisely. Adjusting accuracy is limited to 5cm.
- Switch repeatability avg.> 10000 operations (5000 cycles) per switch.
- PC(Polycarbonate) Switch, operating temperature of 120°C is available.
- Attenuation values are adjustable in a power-on state, test data can be read continuously, no interruption.

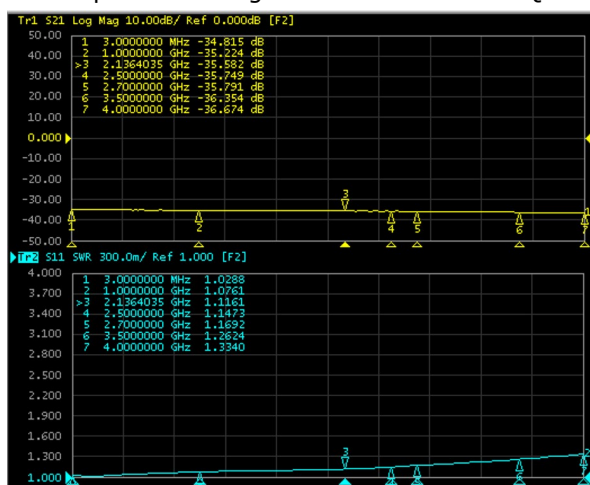
Specifications

Frequency Range	DC to 4.2GHz
Attenuation	0 to 35dB
Step Value	1dB
Insertion loss at 0dB (typ.)	
QMA connector	1dB at 1 GHz
Attenuation Accuracy (typ.)	
QMA connector	+0.9dB at 1GHz +0.85dB at 2GHz +1.55dB at 3GHz +1.80dB at 4.2GHz
Nominal Impedance	50 Ohm
Average Power	5 Watt
Operating Temperature	-40°C to +85°C

Freq. Range (GHz)	Connector Type	VSWR(:1)	
		Typ.	Max.
DC to 4.2	QMA	1.25	1.45

Characteristic

For example the testing curves of VAS073501Q51C of 35dB



Yantel Corporation

Add: No.308-322, 3F, Building 1, Juchuang Jingu Innovation Park, Wenyuan Road 35, Xili Street, Nanshan, Shenzhen, China

Tel: 86-755-8355-1886 Fax: 86-755-8355-2533

Rev A1.0

For detailed performance specs & shopping online see Yantel web site : www.yantel-corp.com

1 / 3

Model No. Description

VAS	**	**	**	*	*	*
	Type	Attenuation Range	Step Value	Connector Type	Max. Power	Connector Option

VAS: Step Variable Attenuator

Type: 06 represents type number

Attenuation Range: Maximum attenuation.

Connector Type: S and N available. S is SMA and N is N type connector and Q is QMA.

Max. Power: 2 and 5 are available, currently 2W and 5W are available.

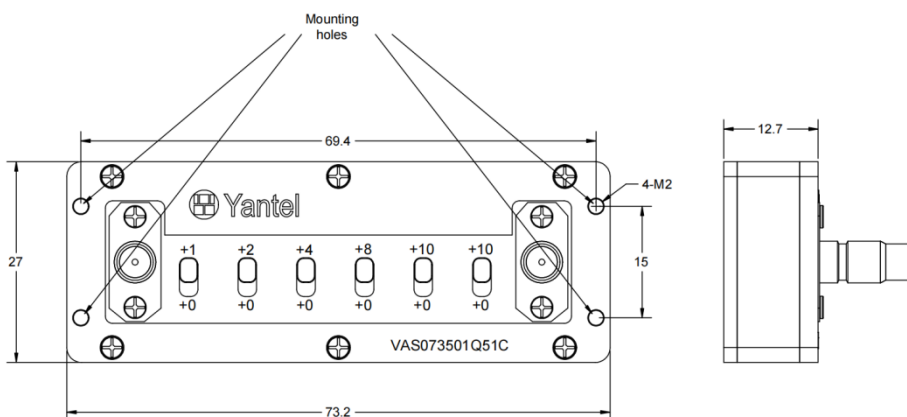
Connector Options:

Options	IO
1	Female/Female
2	Male/Female
3	Male/Male

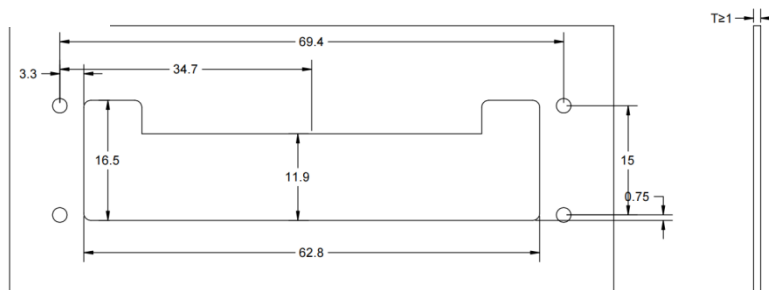
Connector Position: "A" represents back connectors, without "A" represents left and right connectors.

Package Outlines

QMA Connector Units:mm



Panel:



NOTE:

1. ALL dimensions shown in mm (tolerance: $\pm 0.05\text{mm}$) unless stated otherwise
2. RoHS Compliant in accordance with EU Directive (2002/95/EC)

Yantel Corporation

Add: No.308-322, 3F, Building 1, Juchuang Jingu Innovation Park, Wenyuan Road 35, Xili Street, Nanshan, Shenzhen, China

Tel: 86-755-8355-1886 Fax: 86-755-8355-2533

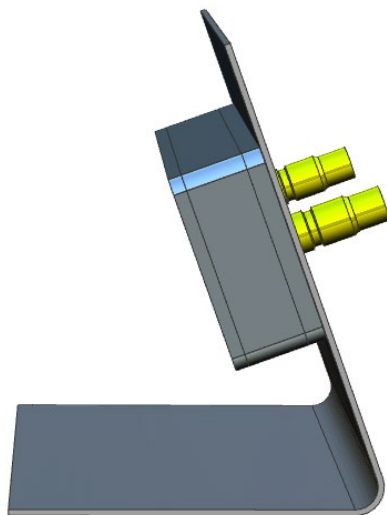
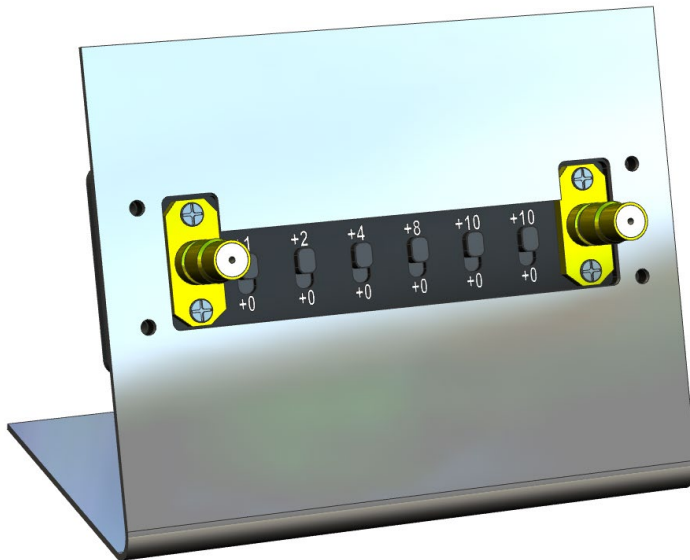
Rev A1.0

For detailed performance specs & shopping online see Yantel web site : www.yantel-corp.com

Application case:

Repeater: This VAS series can be rack mountable, easier to operate from the rack outside.

Application



Note:

Attempt to disassemble the product can damage it and void your warranty. In case of any malfunction, please contact your local representative, distributor or the factory immediately.

Yantel Corporation

Add: No.308-322, 3F, Building 1, Juchuang Jingu Innovation Park, Wenyuan Road 35, Xili Street, Nanshan, Shenzhen, China

Tel: 86-755-8355-1886 Fax: 86-755-8355-2533