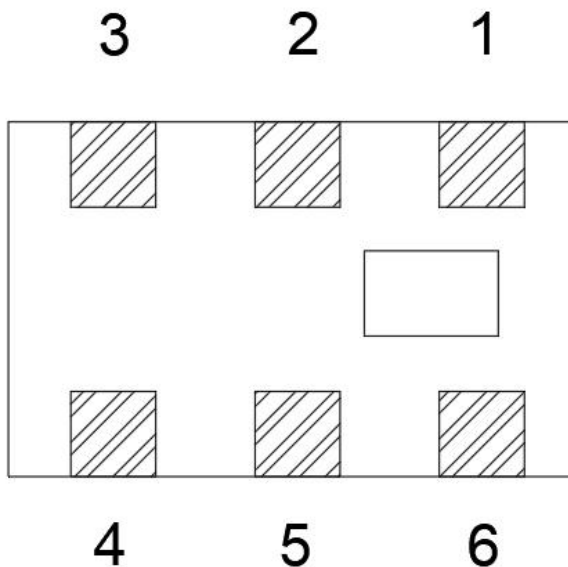


FEATURES

- Multilayer monolithic construction yields high reliability
- Low insertion loss and small size SMD chip design
- Can simplify your complex tuning and circuit design
- LTCC process

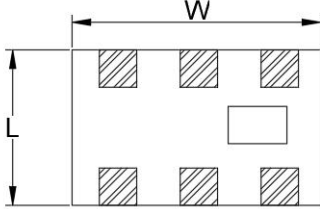
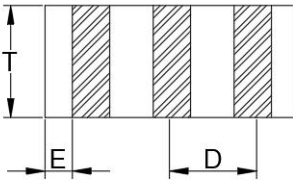
SPECIFICATIONS

NO.	Parameter	SPC
1	Frequency (MHz)	500~700
2	VSWR	2.0
3	Amplitude balance (dB)	2.0
4	Impedance ratio	50;50
5	Phase balance (°)	180±10

CONSTRUCTION


PIN	Connection
1	Unbalanced Port
2	GND
3	balanced Port
4	balanced Port
5	GND
6	NC

DIMENSIONS

<p style="text-align: center;">TOP VIEW</p>  <p style="text-align: center;">FRONT VIEW</p> 	L	2.0±0.20
	W	1.25±0.20
	T	0.95±0.20
	D	0.65±0.10
	E	0.30±0.10

Unit: mm

Line width to be designed to match 50 Ω characteristic impedance, depending on PCB material and thickness

Typical Electrical Characteristics (T=25°C)
RELIABILITY TEST

Temperature range: 25±5°C

Relative Humidity range: 55~75%RH

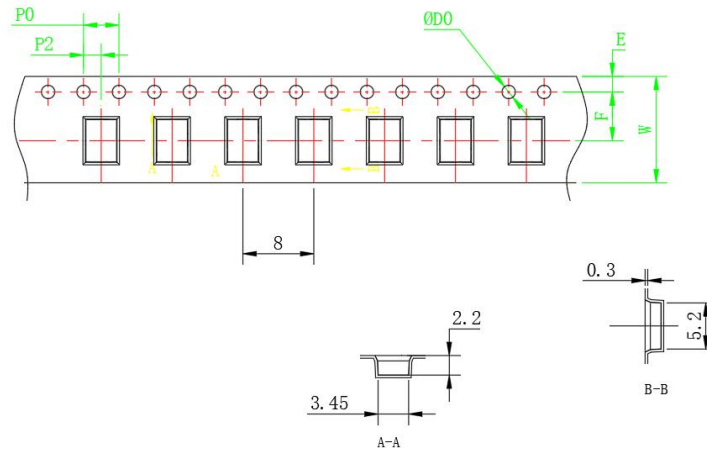
Operating Temperature range: -40°C~+85°C

Storage Temperature range: -40°C~+85°C

Test item	Test condition / Test method	Specification
Solderability	Solder bath temperature: 235 ± 5°C Immersion time: 2 ± 0.5 sec Solder: Sn3Ag0.5Cu for lead-free	At least 95% of a surface of each terminal electrode must be covered by fresh solder.
Leaching (Resistance to dissolution of metallization)	Solder bath temperature: 260±5°C Leaching immersion time: 30 ± 0.5 sec Solder: SN63A	Loss of metallization on the edges of each electrode shall not exceed 25%.
Resistance to soldering heat	Preheating temperature : 120~150 °C ,1 minute. Solder temperature: 270±5°C,10±1 sec Solder: Sn3Ag0.5Cu for lead-free Measurement to be made after keeping at room temperature for 24±2 hrs.	No mechanical damage. Electrical specification shall satisfy the descriptions in electrical characteristics under the operational temperature range within -40 ~ 85°C. Loss of metallization on the edges of each electrode shall not exceed 2

		5%.
Drop Test	Height: 75 cm Test Surface: Rigid surface of concrete or steel. Times: 6 surfaces for each units; 2 times for each side.	No mechanical damage. Electrical specification shall satisfy the descriptions in electrical characteristics under the operational temperature range within -40 ~ 85°C.
Vibration	Frequency: 10Hz~55Hz~10Hz(1min) Total amplitude: 1.5mm Test times: 6hrs. (Two hrs. each in three mutually perpendicular directions)	No mechanical damage. Electrical specification shall satisfy the descriptions in electrical characteristics under the operational temperature range within -40 ~ 85°C.
Adhesive Strength of Termination	Pressurizing force: 5N(\leq 0603); 10N(>0603) Test time: 10 \pm 1 sec	No remarkable damage or removal of the termination.
Bending test	The middle part of substrate shall be pressurized by means of the pressurizing rod at a rate of about 1 mm/s per second until the deflection becomes 1mm/s and then pressure shall be maintained for 5 \pm 1 sec. Measurement to be made after keeping at room temperature for 24 \pm 2 hours	No mechanical damage. Electrical specification shall satisfy the descriptions in electrical characteristics under the operational temperature range within -40 ~ 85°C.
Temperature cycle	1. 30 \pm 3 minutes at -40°C \pm 3°C, 2. 10~15 minutes at room temperature, 3. 30 \pm 3 minutes at +85°C \pm 3°C, 4. 10~15 minutes at room temperature, Total 100 continuous cycles Measurement to be made after keeping at room temperature for 24 \pm 2 hrs.	No mechanical damage. Electrical specification shall satisfy the descriptions in electrical characteristics under the operational temperature range within -40 ~ 85°C.
High temperature	Temperature: 85°C \pm 2°C Test duration: 1000+24/-0 hours Measurement to be made after keeping at room temperature for 24 \pm 2 hrs.	No mechanical damage. Electrical specification shall satisfy the descriptions in electrical characteristics under the operational temperature range within -40 ~ 85°C.
Humidity	Humidity: 90% to 95% R.H. Temperature: 40 \pm 2°C Time: 1000+24/-0 hrs. Measurement to be made after keeping at room temperature for 24 \pm 2 hrs.	No mechanical damage. Electrical specification shall satisfy the descriptions in electrical characteristics under the operational temperature range within -40 ~ 85°C.
Low temperature	Temperature: -40°C \pm 2°C Test duration: 1000+24/-0 hours Measurement to be made after keeping at room temperature for 24 \pm 2 hrs.	No mechanical damage. Electrical specification shall satisfy the descriptions in electrical characteristics under the operational temperature range within -40 ~ 85°C.

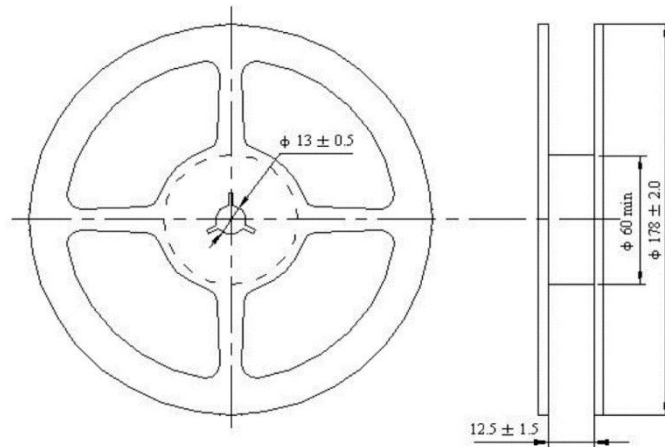
PACKAGING



Plastic Tape specifications (unit: mm)

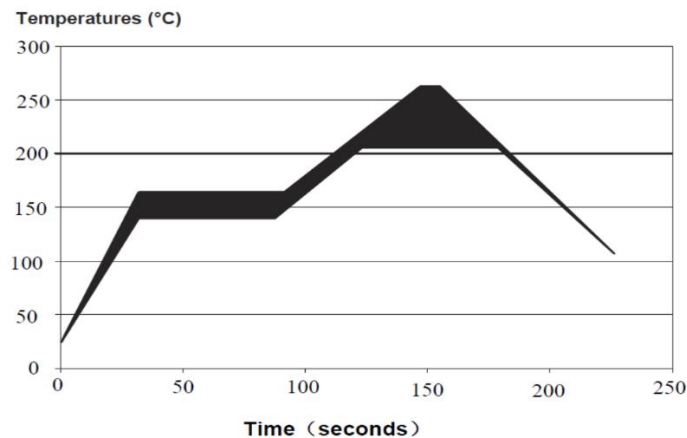
Index	A0	B0	ØD0	T	W	E	F	P0	P1	P2
Dimension (mm)	3.45 ± 0.1	5.20 ± 0.1	1.50 ± 0.1	2.20 ± 0.1	12.0 ± 0.1	1.75 ± 0.1	5.50 ± 0.1	4.0 ± 0.1	8.0 ± 0.1	2.00 ± 0.1

Reel dimensions



Taping Quantity: 1000 pieces per 7" reel

Solder Reflow Standard Conditioning



Yantel Corporation

Add: No.308-322,3F,Building 1,Juchuang Jingu Innovation Park,Wenyuan Road 35,Xili Street,Nanshan,Shenzhen,China

Tel: 86-755-8355-1886 Fax: 86-755-8355-2533

For detailed performance specs & shopping online see Yantel web site : www.yantel-corp.com

CAUTION / WARNING

- Information in this document is believed to be accurate and reliable. However, CE does not give any representations or warranties, expressed or implied, as to the accuracy or completeness of such information and shall have no liability for the consequences of use of such information.
- Users should independently evaluate the suitability of and test each product selected for their own applications, and CE assumes no liability whatsoever relating to the choice, selection or use of the CE products and services described herein.
- CE reserves the right to change or update, without notice, any information contained in this publication; to change, without notice, the design, construction, processing, or specification of any product; and to discontinue or limit production or distribution of any product.
- Information in this document supersedes and replaces all information previously supplied.
- Products are not designed, authorized, or warranted to be suitable for use in medical, military, aircraft, space, or life support equipment, nor in applications where failure or malfunction of an CE product can reasonably be expected to result in personal injury, death or severe property or environmental damage. CE accepts no liability for inclusion and/or use of CE products in such equipment or applications and therefore such inclusion and/or use are at the customer's own risk.
- This document as well as the item(s) described herein may be subject to export control regulations. Export might require a prior authorization from national authorities.
- Resale of CE products with provisions different from the statements and/or technical features set forth in this document shall immediately void any warranty granted by CE for the CE product or service described herein and shall not create or extend in any manner whatsoever, any liability of CE.
- CE expressly disclaims all implied warranties regarding the information contained herein, including, but not limited to, any implied warranties of merchantability or fitness for a particular purpose. CE only obligations are those in the CE Standard Terms and Conditions of Sale and in no case will CE be liable for any incidental, indirect, or consequential damages arising from the sale, resale, use, or misuse of its products.

Storage Conditions

Temperature : +5 to +30 °C

Humidity : 20 to 70% RH

Term of storage : Within 12 months (After the delivery) *

Baking : Unnecessary

* After peeling off cover tape, do not keep exposing the products to the open air. For the products stored longer than 12 months, confirm their terminals and solderability before use.