

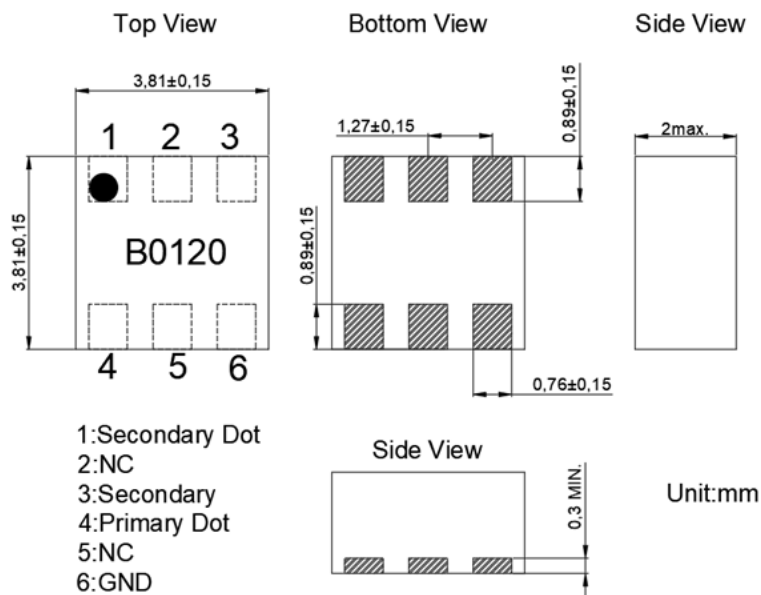
Features

- Multilayer monolithic construction yields high reliability
- Low insertion loss and small size SMD chip design
- Can simplify your complex tuning and circuit design
- LTCC process

Specifications

NO.	Items	Spec	Typ.	Unit
1	Frequency range	80~160	80~160	MHz
2	Unbalanced Impedance	50	50	Ohms
3	Differential Balanced Imp.	50	50	Ohms
4	Return Loss at Unbalanced Port	10 min.	20	dB
5	Insertion Loss	1.8max.	1.4	dB
6	Amplitude Difference	0.6 max.	0.38	dB
7	Phase Difference	180 ± 5	4.9	deg
Operating & Storage Condition (Component)				
Operation Temperature Range: -40°C ~ +85°C				
Storage Temperature Range: -40°C ~ +85°C				
Storage Condition before Soldering (Included packaging material)				
Storage Temperature Range: +5 ~ +40 °C				
Humidity: 30 to 70% relative humidity				

Construction & Dimensions



Yantel Corporation

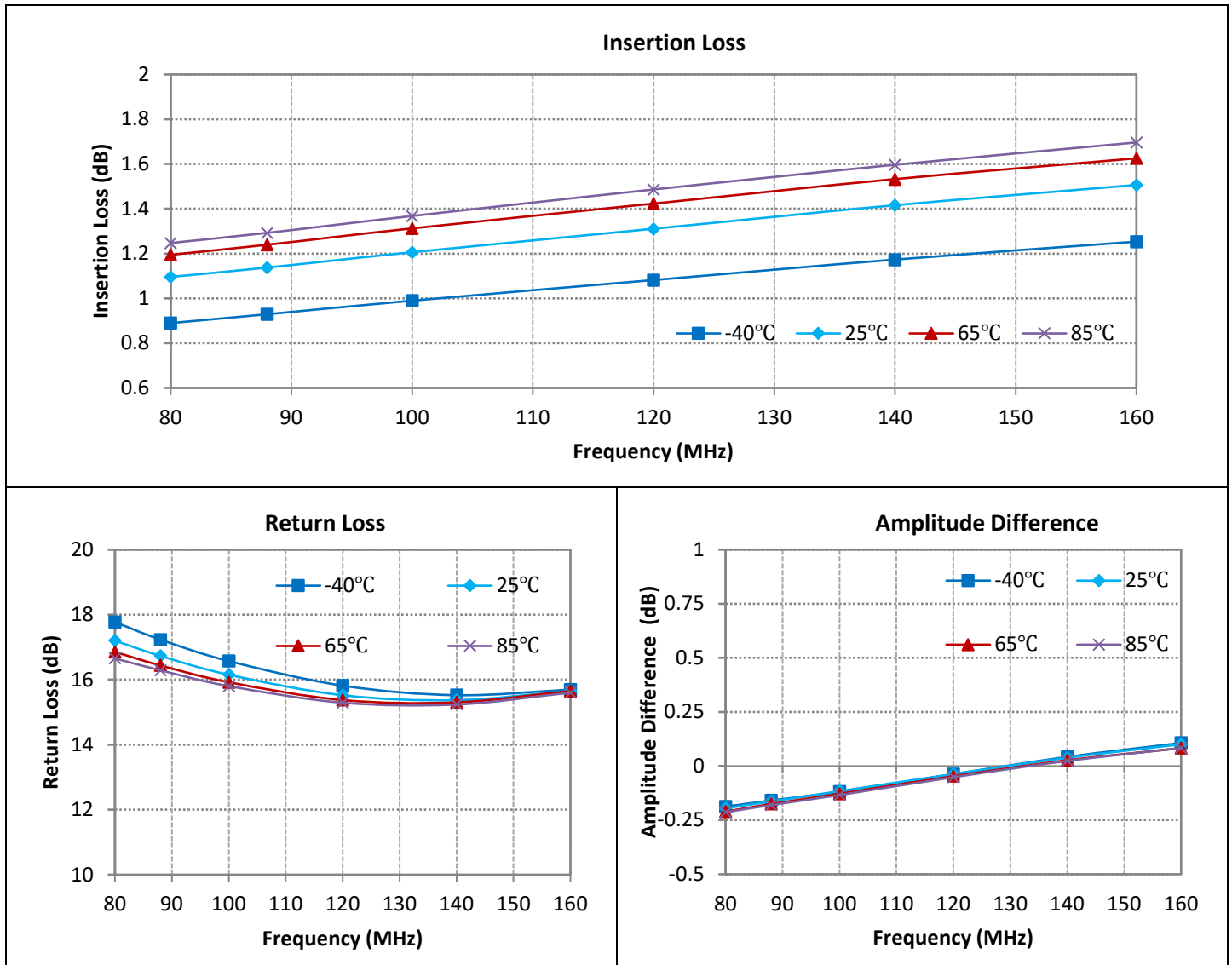
Add: No.308-322,3F,Building 1,Juchuang Jingu Innovation Park,Wenyuan Road 35,Xili Street,Nanshan,Shenzhen,China

Tel: 86-755-8355-1886 Fax: 86-755-8355-2533

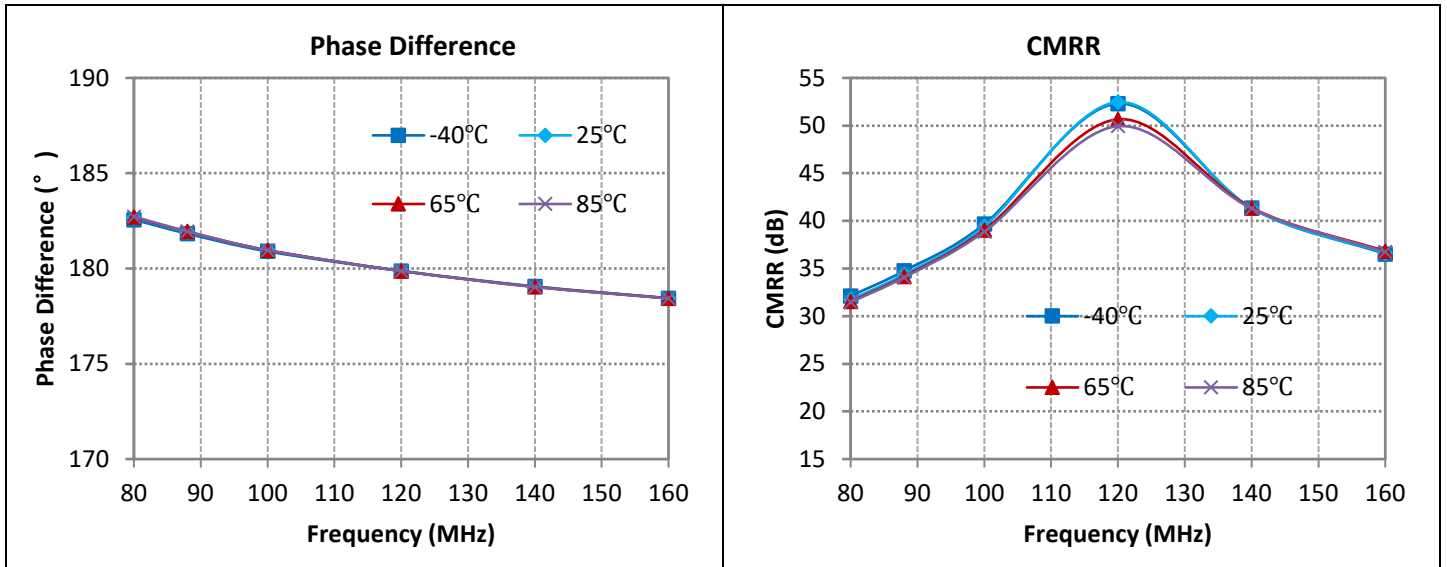
For detailed performance specs & shopping online see Yantel web site : www.yantel-corp.com

Typical Performance Data T=25°C

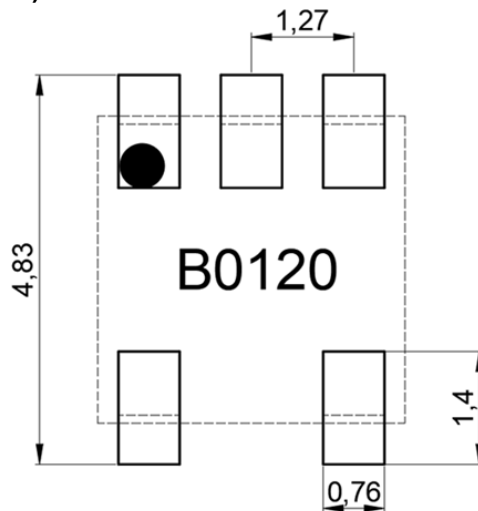
Frequency (MHz)	Return Loss (dB)	Insertion Loss (dB)	Amplitude Difference (dB)	Phase (deg)	CMRR (dB)
80	17.20	1.10	-0.20	182.67	31.73
88	16.73	1.14	-0.16	181.91	34.40
100	16.15	1.21	-0.12	180.96	39.42
120	15.52	1.31	-0.04	179.88	52.46
140	15.37	1.42	0.04	179.05	41.34
160	15.66	1.51	0.10	178.44	36.62

Typical Electrical Characteristics (T=-40°C,25°C,65°C,85°C)


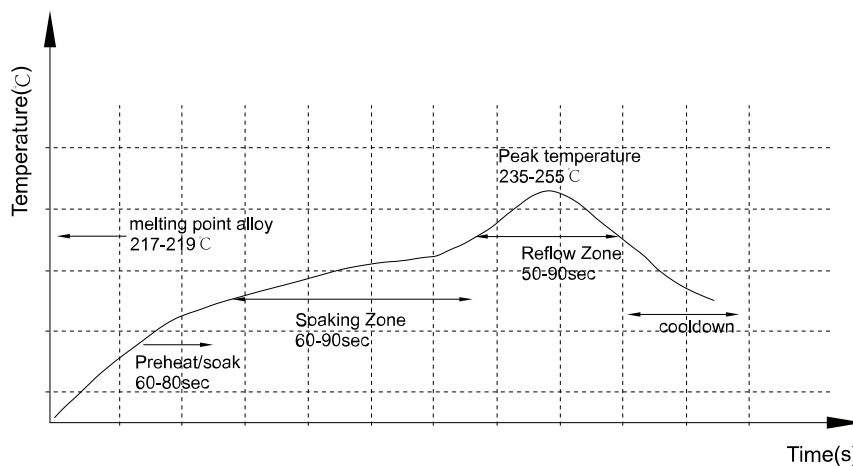
Typical Electrical Characteristics (T=-40°C,25°C,65°C,85°C)



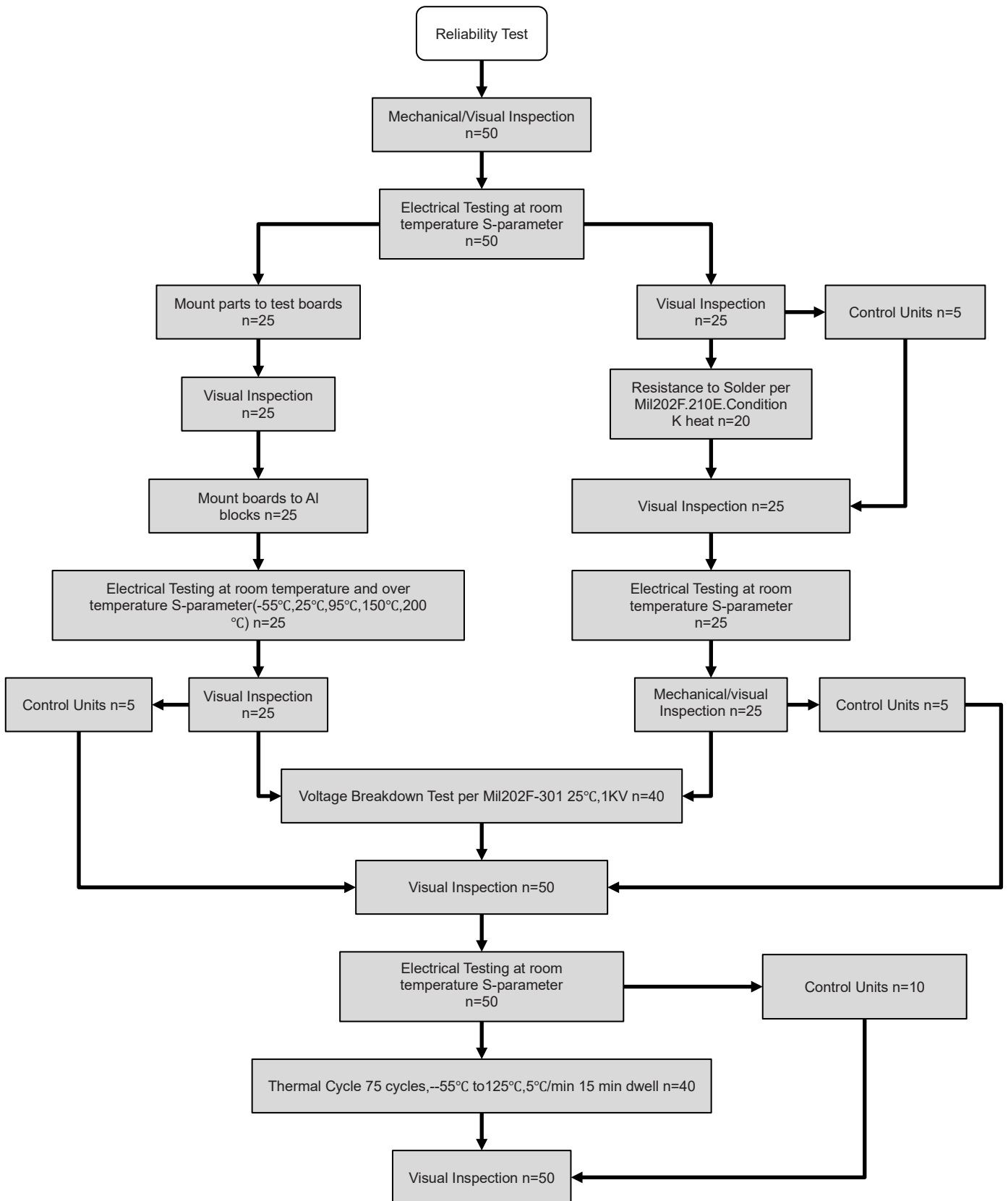
Mounting Considerations (unit: mm)



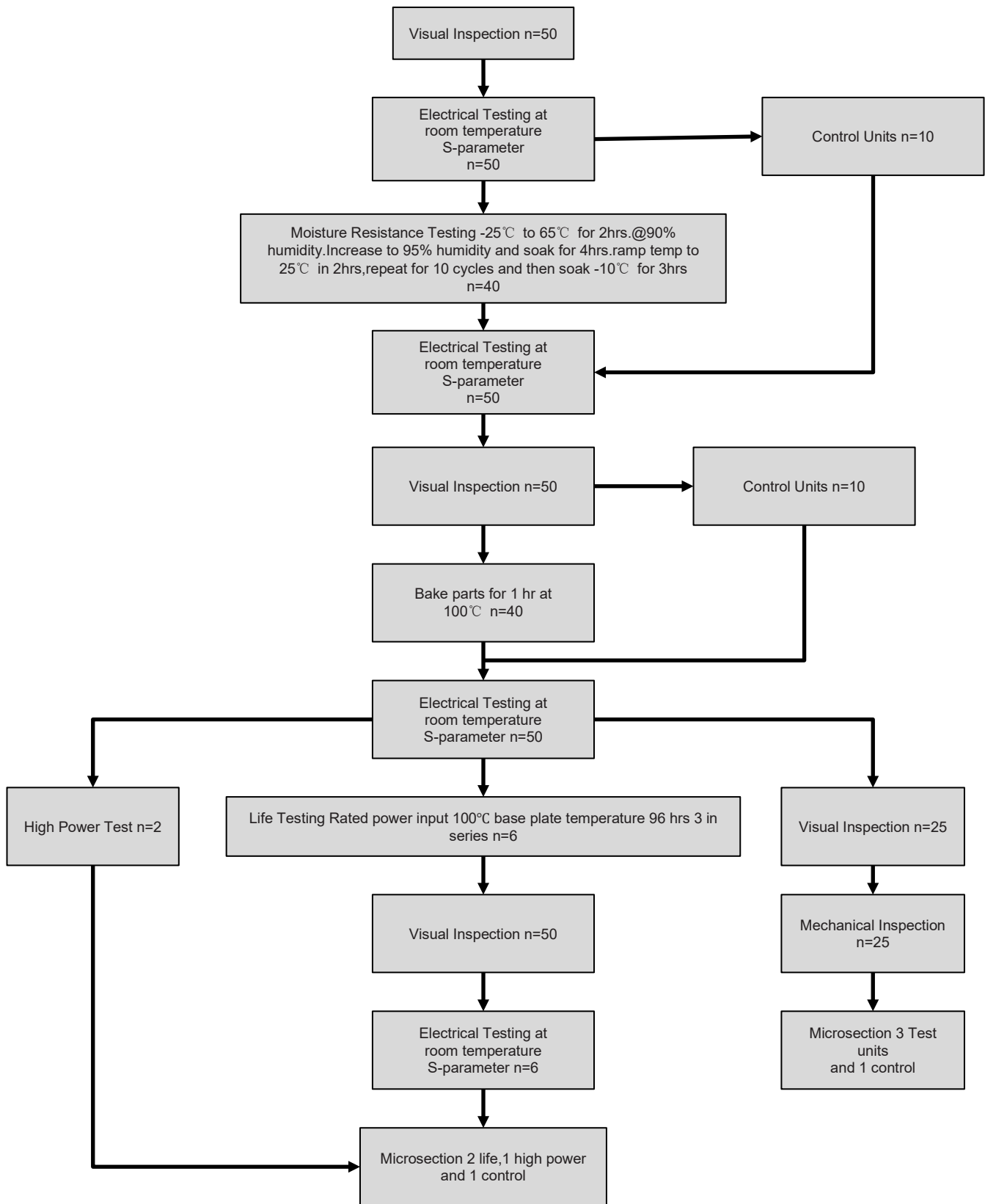
Reflow Profile

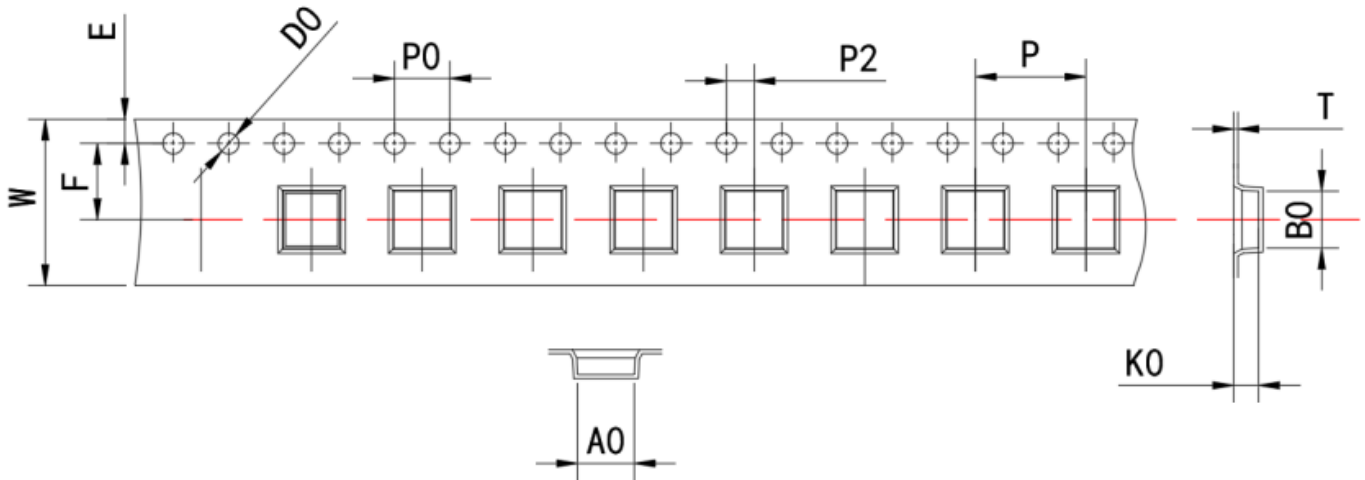


Reliability Test Flow



Reliability Test Flow

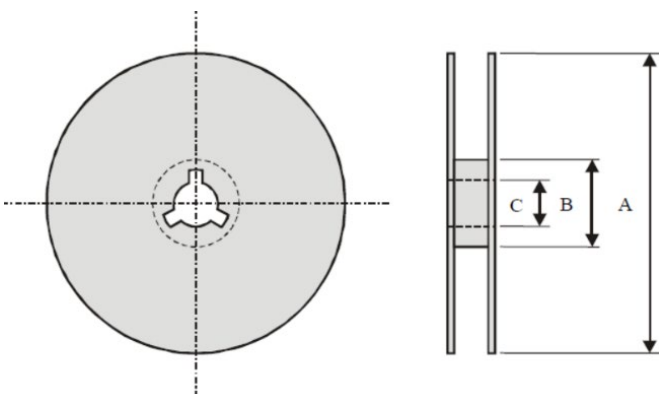


Plastic Tape specifications (unit: mm)


Index	A0	B0	ØD	T	W	E	F	P	P0	P2
Dimension (mm)	4.1 ± 0.1	4.1 ± 0.1	1.50+01/0	0.3±0.05	12.0 ± 0.3	1.75 ± 0.1	5.50 ± 0.1	8.0 ± 0.1	4.0±0.1	2.00 ± 0.1
Index	K0									
Dimension (mm)	1.80±0.1									

NOTE :

- 10 sprocket hole pitch cumulative tolerance is ±0.20mm.
- 1mm maximum camber in 100mm long for carrier.
- K0 be mesured from the top carrier surface to the bottom surface inside the tape pocket.
- All dimension scopes are in term of EIA-481-C STANDARD.
- Material: Transparent Anti-static Polystyrence.



Index	A	B	C
Dimension (mm)	Ø179.0	Ø59.8	Ø13.2

Taping Quantity:1200 pieces per 7" reel
Yantel Corporation

Add: No.308-322,3F,Building 1,Juchuang Jingu Innovation Park,Wenyuan Road 35,Xili Street,Nanshan,Shenzhen,China

Tel: 86-755-8355-1886 Fax: 86-755-8355-2533

For detailed performance specs & shopping online see Yantel web site : www.yantel-corp.com