

Features

- Multilayer monolithic construction yields high reliability
- Low insertion loss and small size SMD chip design
- Can simplify your complex tuning and circuit design
- LTCC process

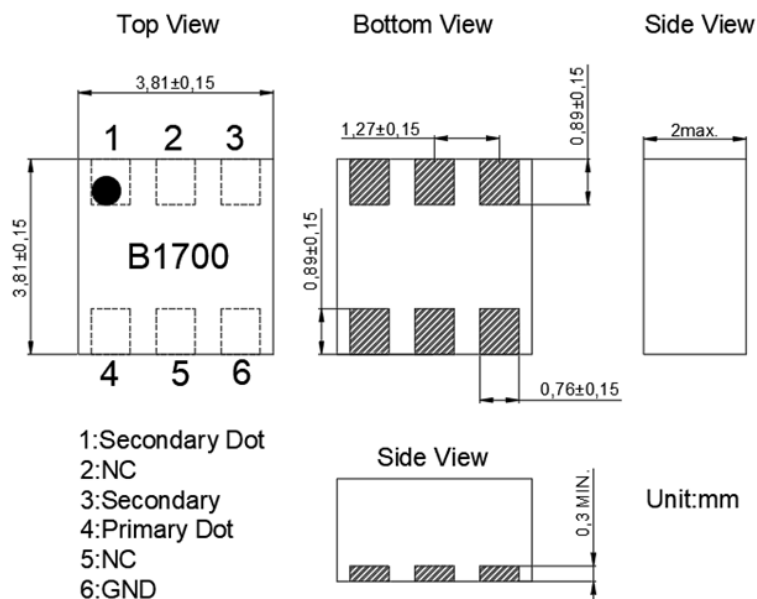
Specifications

NO.	Items	Spec	Typ.	Unit
1	Frequency range	1000~2400	1000~2400	MHz
2	Unbalanced Impedance	50	50	Ohms
3	Differential Balanced Imp.	50	50	Ohms
4	Return Loss at Unbalanced Port	10 min.	16.9	dB
5	Insertion Loss	1.5 max.	1.15	dB
6	Amplitude Difference	±0.6	±0.54	dB
7	Phase Difference	@1000~2200 MHz	180 ± 5	-
		@2200~2400 MHz	180 ± 10	-

Operating (Component)
Operation Temperature Range: -40°C ~ +85°C

Storage Condition before Soldering (Included packaging material)
Storage Temperature Range: +5 ~ +40 °C
Humidity: 30 to 70% relative humidity

Construction & Dimensions



Yantel Corporation

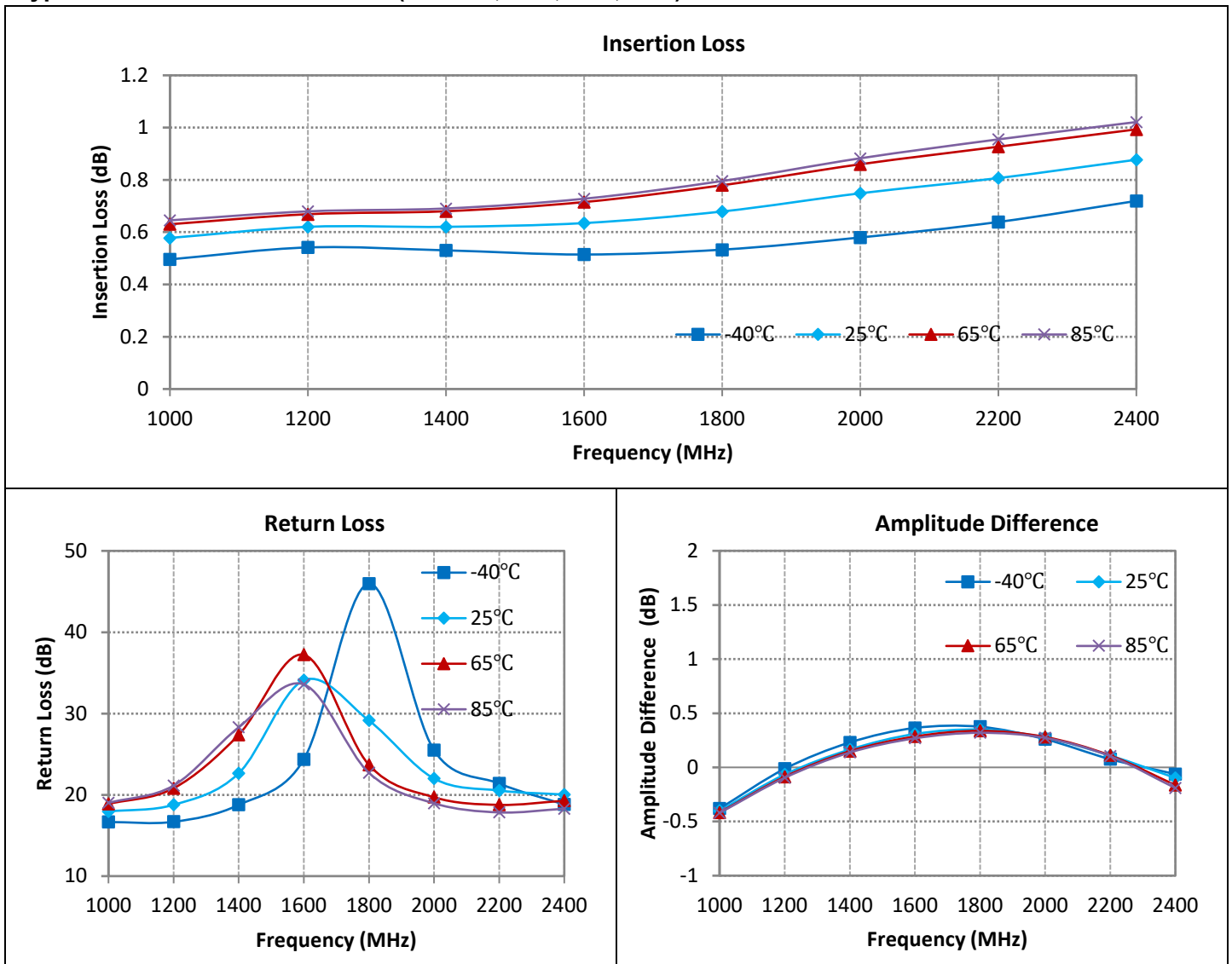
Add: No.308-322,3F,Building 1,Juchuang Jingu Innovation Park,Wenyuan Road 35,Xili Street,Nanshan,Shenzhen,China
Tel: 86-755-8355-1886 Fax: 86-755-8355-2533

For detailed performance specs & shopping online see Yantel web site : www.yantel-corp.com

Typical Performance Data T=25°C

Frequency (MHz)	Return Loss (dB)	Insertion Loss (dB)	Amplitude Difference (dB)	Phase (deg)	CMRR (dB)
1000	17.95	0.58	-0.40	179.46	32.56
1200	18.77	0.62	-0.07	177.86	34.39
1400	22.65	0.62	0.16	177.31	31.93
1600	34.09	0.63	0.31	177.63	31.29
1800	29.13	0.68	0.35	178.03	31.55
2000	22.00	0.75	0.28	178.19	33.00
2200	20.53	0.81	0.11	177.78	33.80
2400	20.03	0.88	-0.10	176.47	30.09

Typical Electrical Characteristics (T=-40°C,25°C,65°C,85°C)

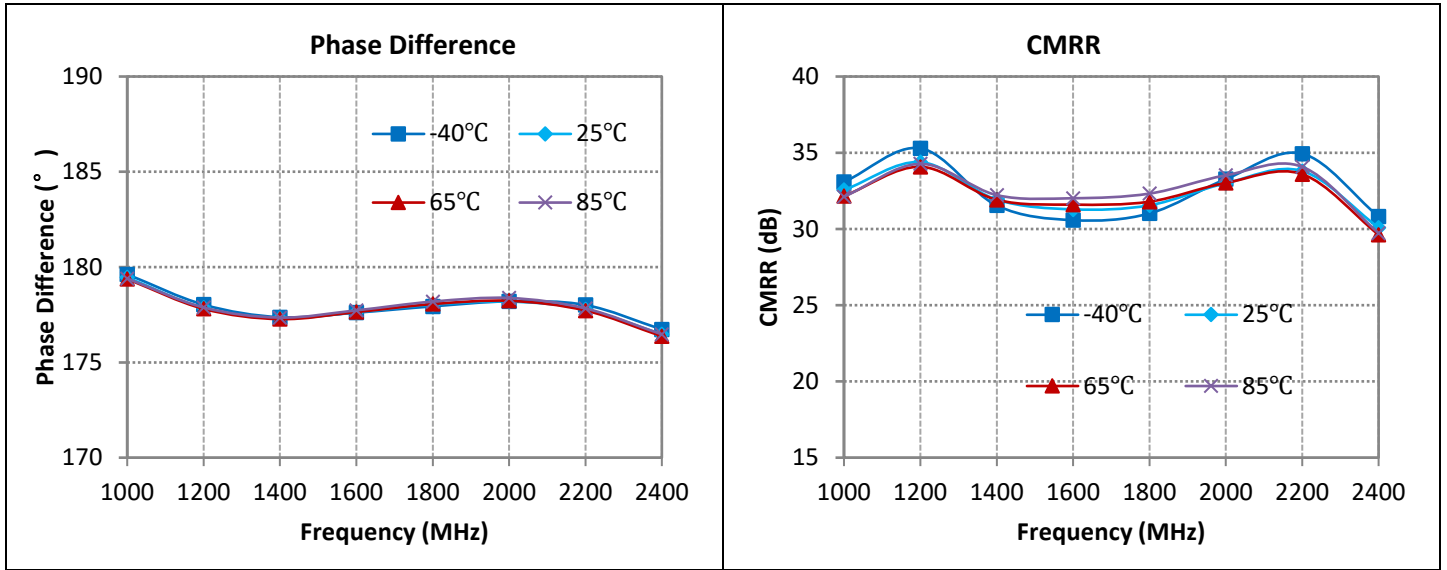


Yantel Corporation

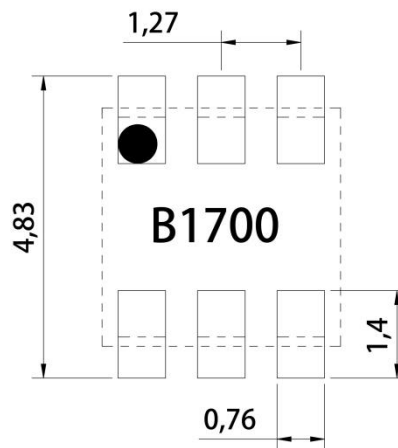
Add: No.308-322,3F,Building 1,Juchuang Jingu Innovation Park,Wenyuan Road 35,Xili Street,Nanshan,Shenzhen,China
 Tel: 86-755-8355-1886 Fax: 86-755-8355-2533

For detailed performance specs & shopping online see Yantel web site : www.yantel-corp.com

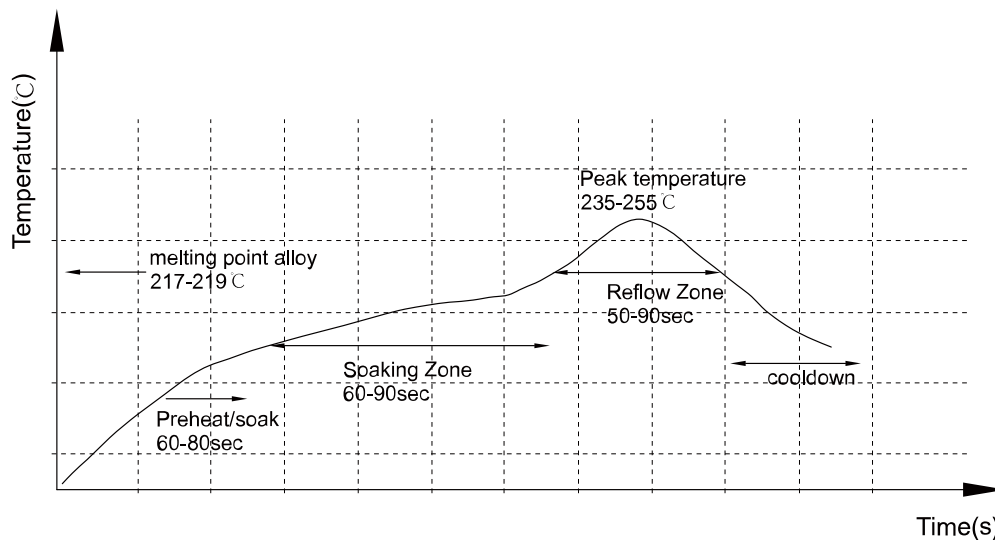
Typical Electrical Characteristics (T=-40°C,25°C,65°C,85°C)



Mounting Considerations (unit: mm)



Reflow Profile

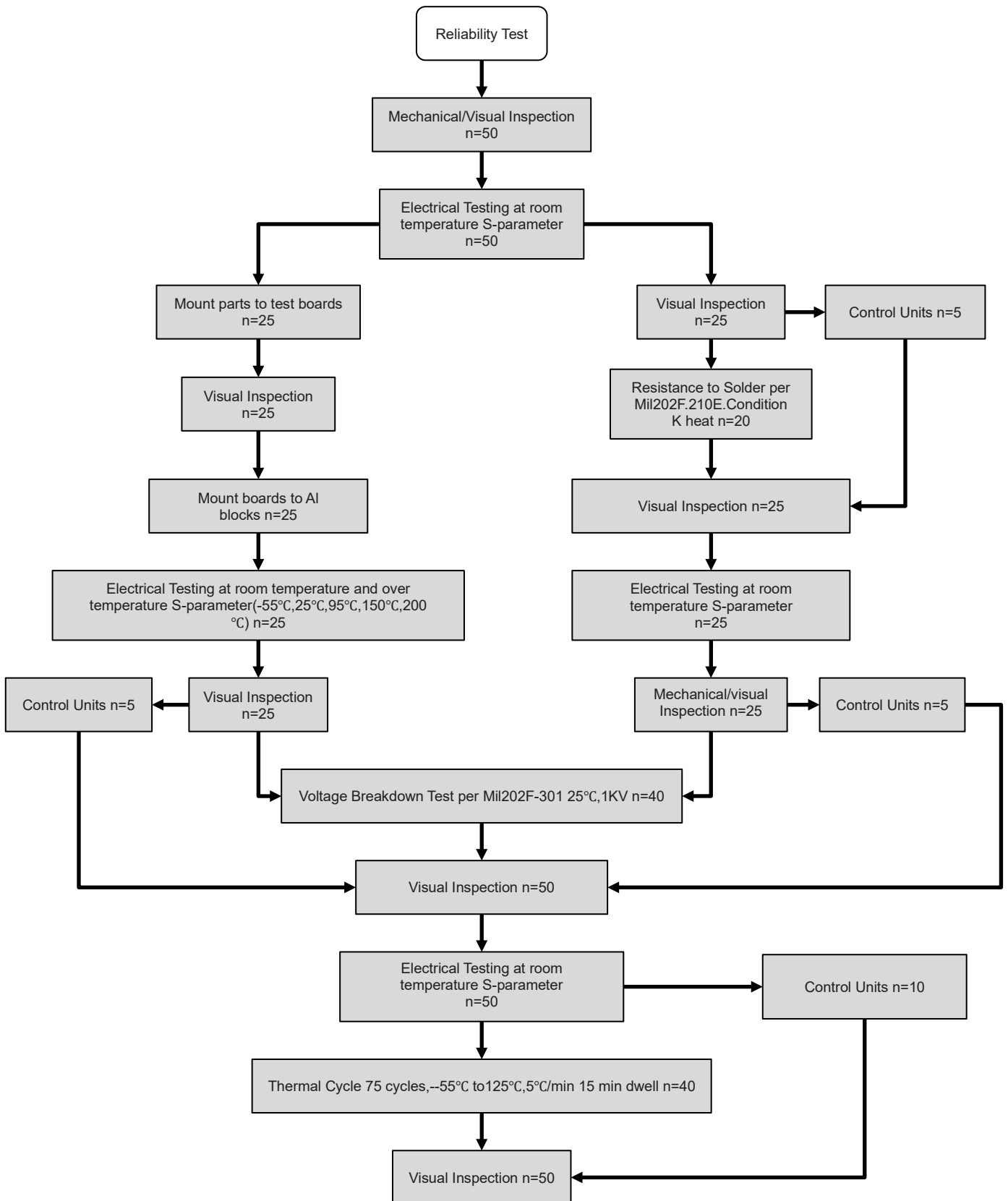


Yantel Corporation

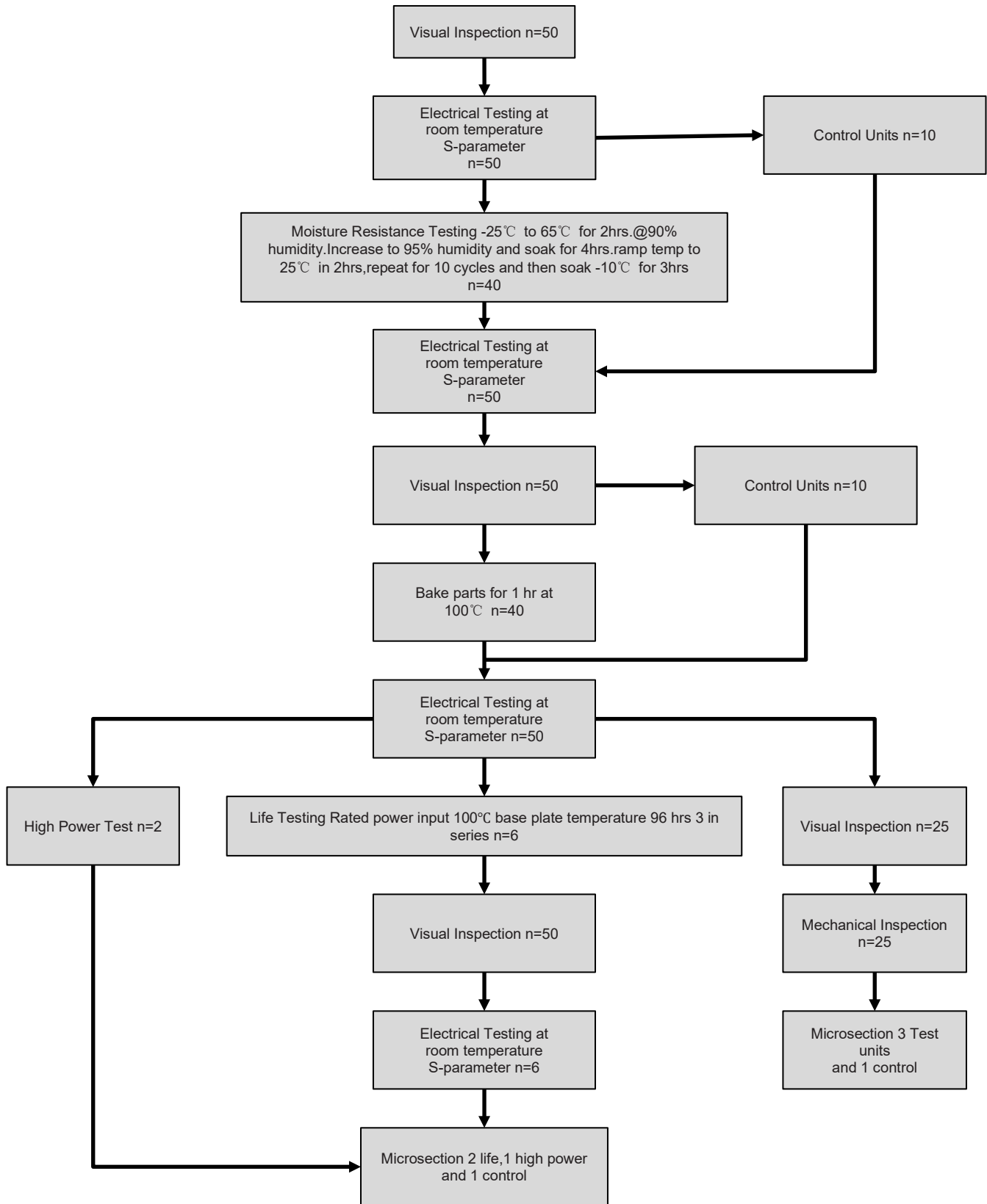
Add: No.308-322,3F,Building 1,Juchuang Jingu Innovation Park,Wenyuan Road 35,Xili Street,Nanshan,Shenzhen,China
 Tel: 86-755-8355-1886 Fax: 86-755-8355-2533

For detailed performance specs & shopping online see Yantel web site : www.yantel-corp.com

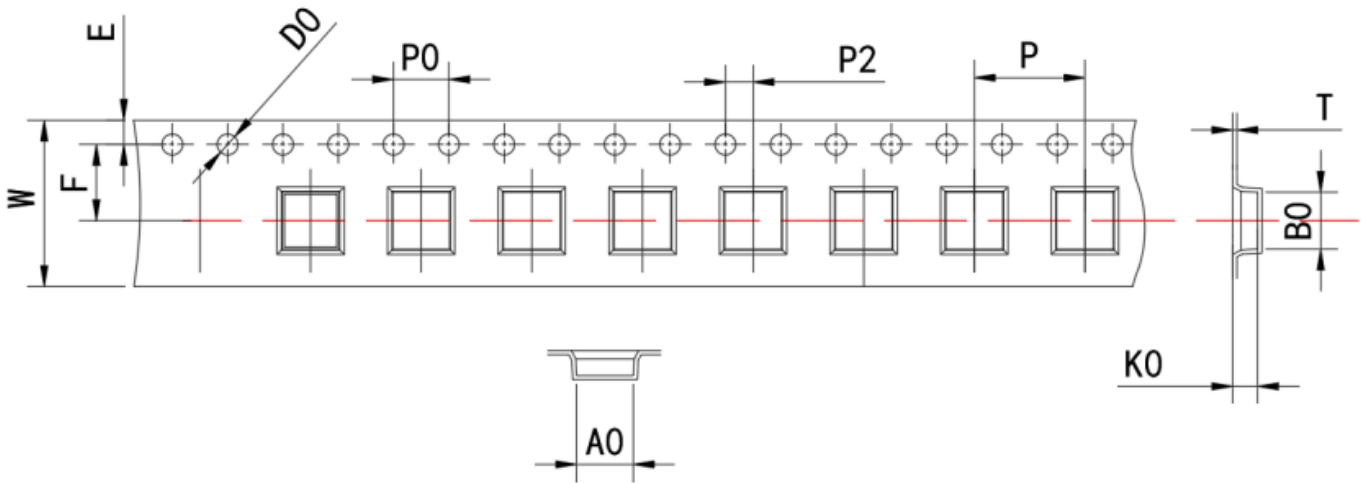
Reliability Test Flow



Reliability Test Flow



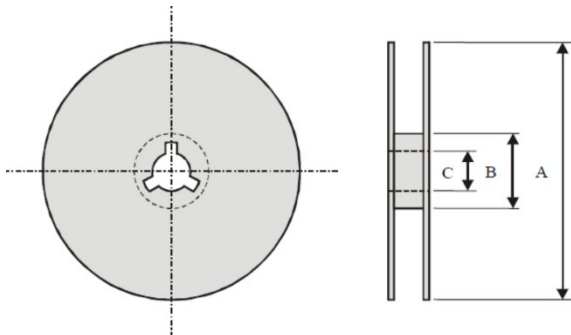
Plastic Tape specifications (unit: mm)



Index	A0	B0	ØD	T	W	E	F	P	P0	P2
Dimension (mm)	4.1 ± 0.1	4.1 ± 0.1	1.50+01/0	0.3±0.05	12.0 ± 0.3	1.75 ± 0.1	5.50 ± 0.1	8.0 ± 0.1	4.0±0.1	2.00 ± 0.1
Index	K0									
Dimension (mm)	1.80±0.1									

NOTE :

- 10 sprocket hole pitch cumulative tolerance is ±0.20mm.
- 1mm maximum camber in 100mm long for carrier.
- K0 be measured from the top carrier surface to the bottom surface inside the tape pocket.
- All dimension scopes are in term of EIA-481-C STANDARD.
- Material: Transparent Anti-static Polystyrene.



Index	A	B	C
Dimension (mm)	Ø179.0	Ø59.8	Ø13.2

Taping Quantity:1200 pieces per 7" reel

Yantel Corporation

Add: No.308-322,3F,Building 1,Juchuang Jingu Innovation Park,Wenyuan Road 35,Xili Street,Nanshan,Shenzhen,China
Tel: 86-755-8355-1886 Fax: 86-755-8355-2533

For detailed performance specs & shopping online see Yantel web site : www.yantel-corp.com