

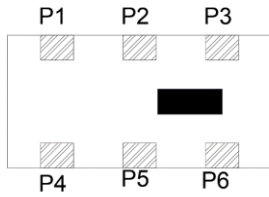
Features

- Multilayer monolithic construction yields high reliability
- Low insertion loss and small size SMD chip design
- Can simplify your complex tuning and circuit design
- LTCC process

Specifications

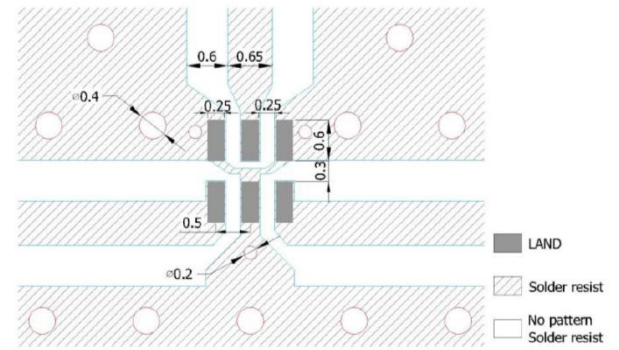
NO.	Specification		
1	Frequency range (MHz)	2400~2500	5170~7125
2	Insertion Loss (dB) @25°C	0.65	1.0
3	Return Loss (dB)	12 min.	10 min.
4	Impedance (Ω)	50	50
5	Attenuation (dB)	2 dB min. @ 3300~4800 MHz	35 dB min. @ 70~108 MHz
		33 dB min. @ 4800~5000 MHz	35 dB min. @ 700~915 MHz
		25 dB min. @ 5170~7125MHz	15 dB min. @ 915~960 MHz
		25 dB min. @ 7200~7500MHz	30 dB min. @ 1425~1470 MHz
		27 dB min. @ 9600~10000MHz	28 dB min. @ 1470~1557 MHz
		20 dB min. @ 12000~12500MHz	26 dB min. @ 1557~1607 MHz
		-	35 dB min. @1710~1785 MHz
		-	26 dB min. @ 1805~1850 MHz
		-	35 dB min. @ 1850~1910 MHz
		-	35 dB min. @ 1910~2020 MHz
		-	23 dB min. @ 2110~2200 MHz
		-	26 dB min. @ 2300~2400 MHz
		-	25 dB min. @ 2400~2500 MHz
		-	20 dB min. @ 2500~2690 MHz
		-	10 dB min. @ 3400~3800 MHz
-	25 dB min. @ 10340~14250 MHz		
-	30 dB min. @ 15510~19500 MHz		
-	22 dB min. @ 19500~21375MHz		
Operating & Storage Condition (Component)			
Operation Temperature Range: -40°C ~ +85°C			
Storage Temperature Range: -40°C~ +85°C			
Storage Condition before Soldering (Included packaging material)			
Storage Temperature Range: +5 ~ +40 °C			
Humidity: 30 to 70% relative humidity			

Construction



PIN	Connection	PIN	Connection
P1	GND	P4	Low Port
P2	Antenna Input	P5	GND
P3	GND	P6	Higher Port

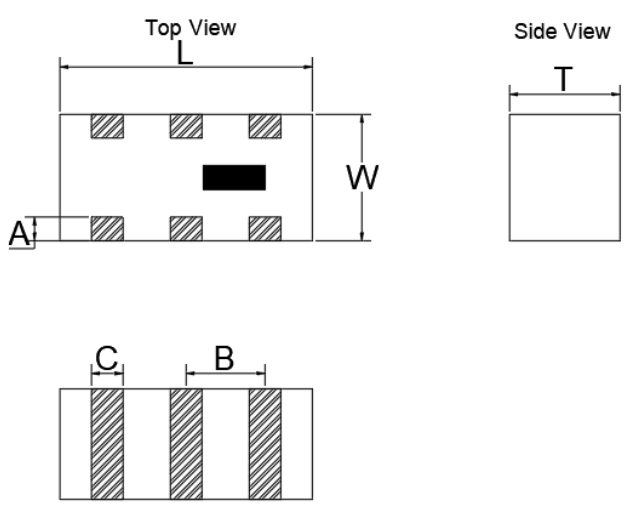
Mounting Considerations



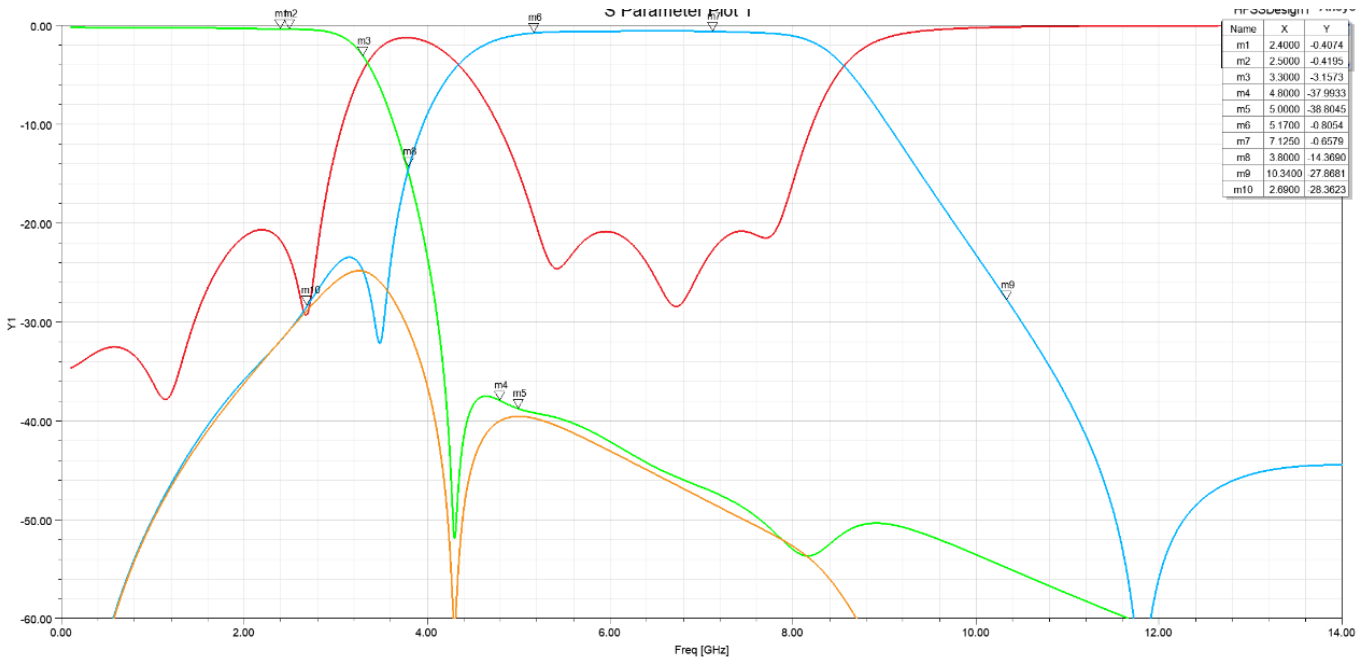
Unit: mm

Line width to be designed to match 50 Ω characteristic impedance, depending on PCB material and thickness

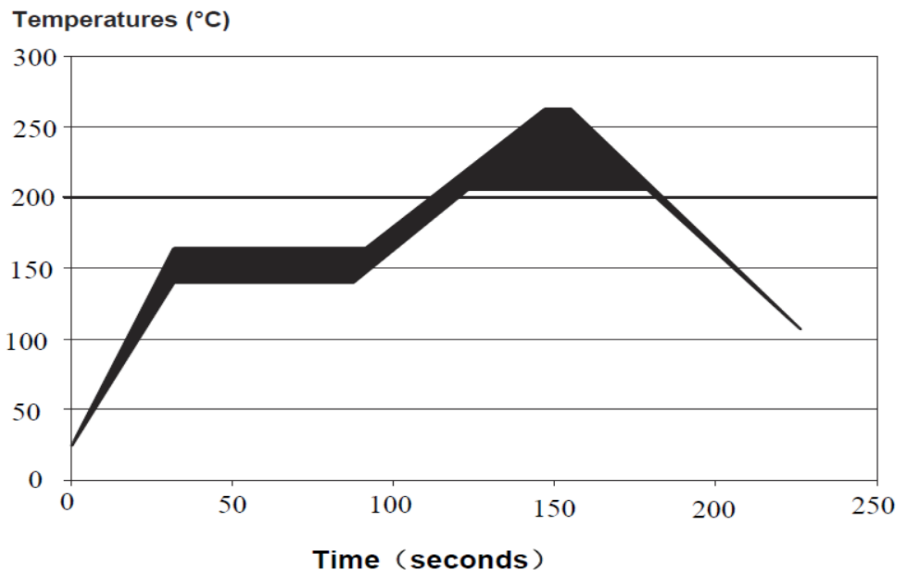
Dimensions

Figure	Symbol	Dimension (mm)
	L	1.6 ± 0.10
	W	0.8 ± 0.10
	T	0.6 ± 0.10
	A	0.15 ± 0.10
	B	0.5 ± 0.10
	C	0.2 ± 0.10

Typical Electrical Characteristics (T=25°C)



Solder Reflow Standard Conditioning



Storage Conditions

Temperature : +5 to +30 °C

Humidity : 20 to 70% RH

Term of storage : Within 12 months (After the delivery)

*Baking : Unnecessary

* After peeling off cover tape, do not keep exposing the products to the open air. For the products stored longer than 12 months, confirm their terminals and solderability before use.

Yantel Corporation

Add: No.308-322,3F,Building 1,Juchuang Jingu Innovation Park,Wenyuan Road 35,Xili Street,Nanshan,Shenzhen,China

Tel: 86-755-8355-1886 Fax: 86-755-8355-2533

For detailed performance specs & shopping online see Yantel web site : www.yantel-corp.com