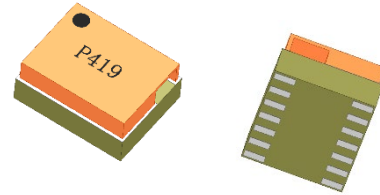


### Features

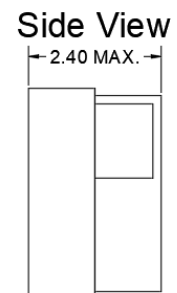
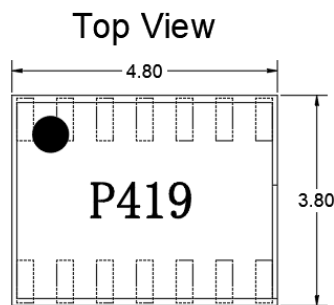
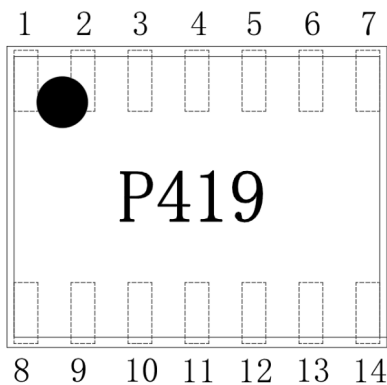
- Multilayer monolithic construction yields high reliability
- Low insertion loss and small size SMD chip design
- Can simplify your complex tuning and circuit design
- LTCC process



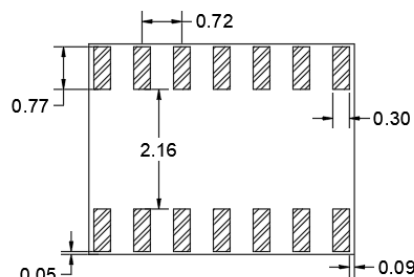
### Specifications

NO.	Items	Spec	Typ.	Unit
1	Frequency range	80~300	80~300	MHz
2	Insertion Loss, above 6.0 dB	1.85 max.	1.3	dB
		@120MHz 1.0max.	0.7	
3	Isolation.	5 min.	6.5	dB
4	Phase Unbalance	5 max.		°
5	Amplitude Unbalance	0.8 max.		dB
6	Return Loss (Input)	9 min.	11.5	dB
7	Return Loss (Output)	9 min.	12.5	dB
<b>Operating &amp; Storage Condition (Component)</b>				
Operation Temperature Range: -40°C ~ +85°C				
Storage Temperature Range: -40°C ~ +85°C				
<b>Storage Condition before Soldering (Included packaging material)</b>				
Storage Temperature Range: +5 ~ +40 °C				
Humidity: 30 to 70% relative humidity				

### Construction & Dimensions



### Bottom View



Unit: mm  
Tolerance: ±0.20mm

SUM PORT	11
PORT 1	2
PORT 2	3
PORT 3	5
PORT 4	6
GND	1、4、7、8、9 、10、12、13、14

### Yantel Corporation

Add: No.308-322,3F,Building 1,Juchuang Jingu Innovation Park,Wenyuan Road 35,Xili Street,Nanshan,Shenzhen,China

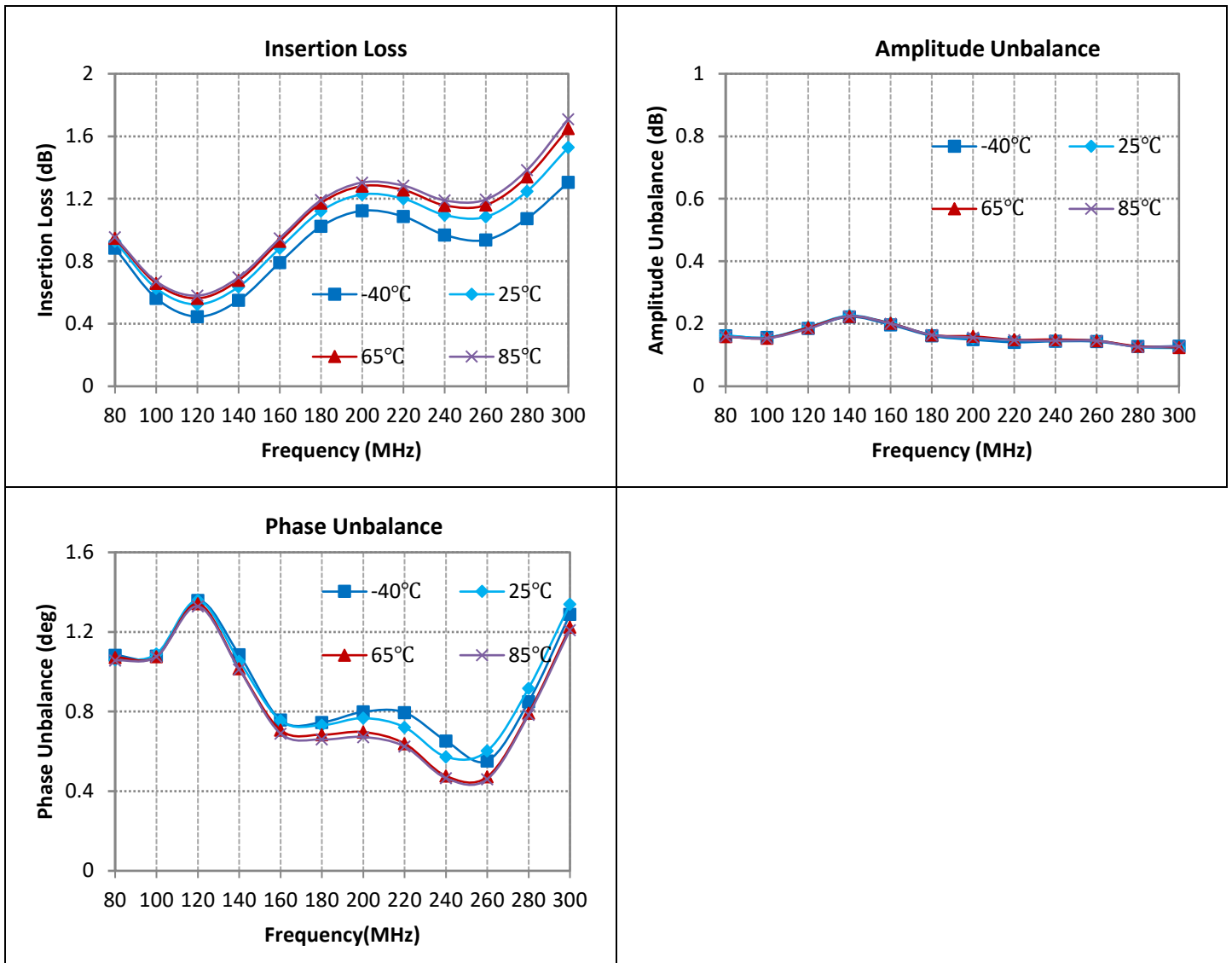
Tel: 86-755-8355-1886 Fax: 86-755-8355-2533

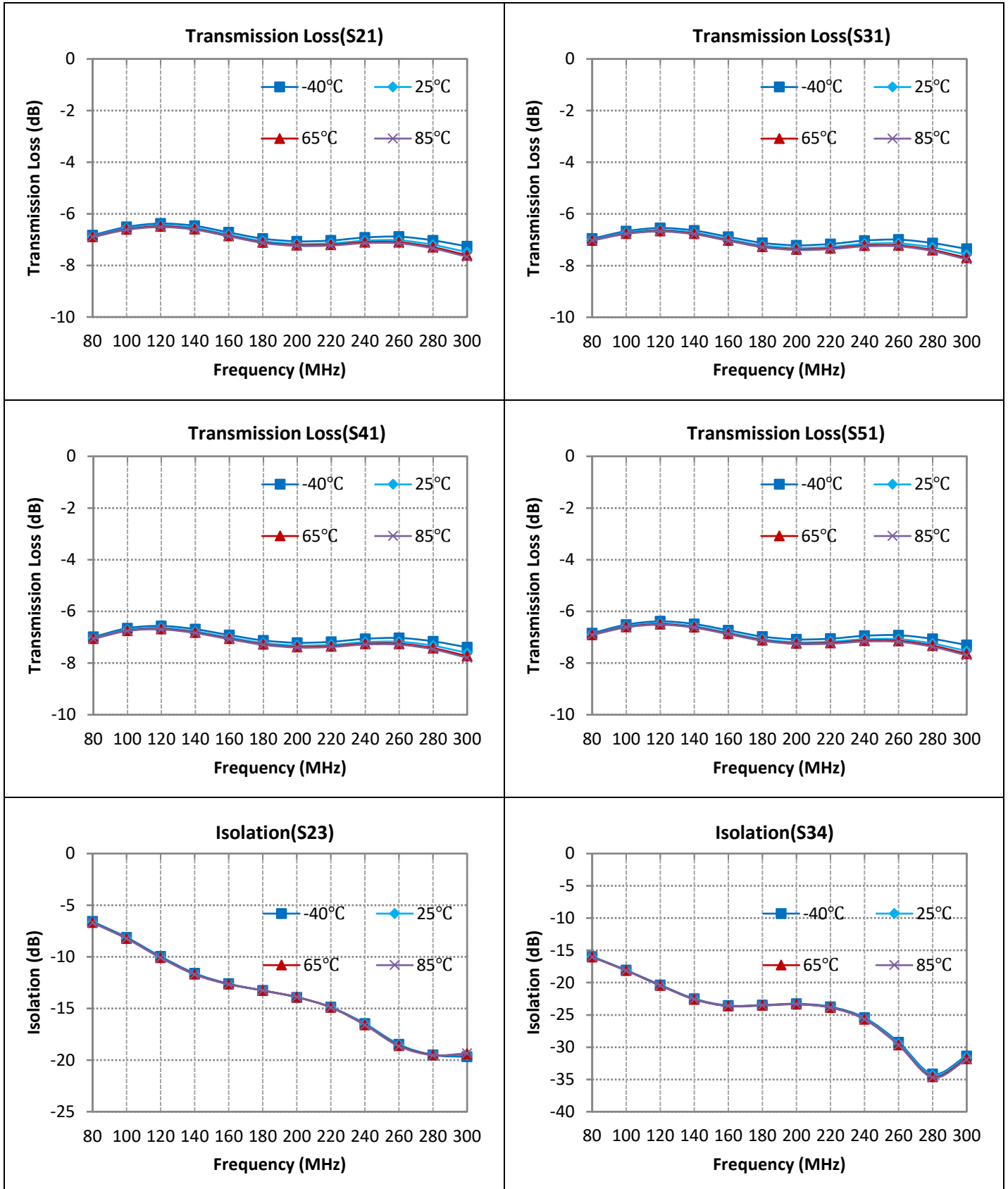
For detailed performance specs & shopping online see Yantel web site : [www.yantel-corp.com](http://www.yantel-corp.com)

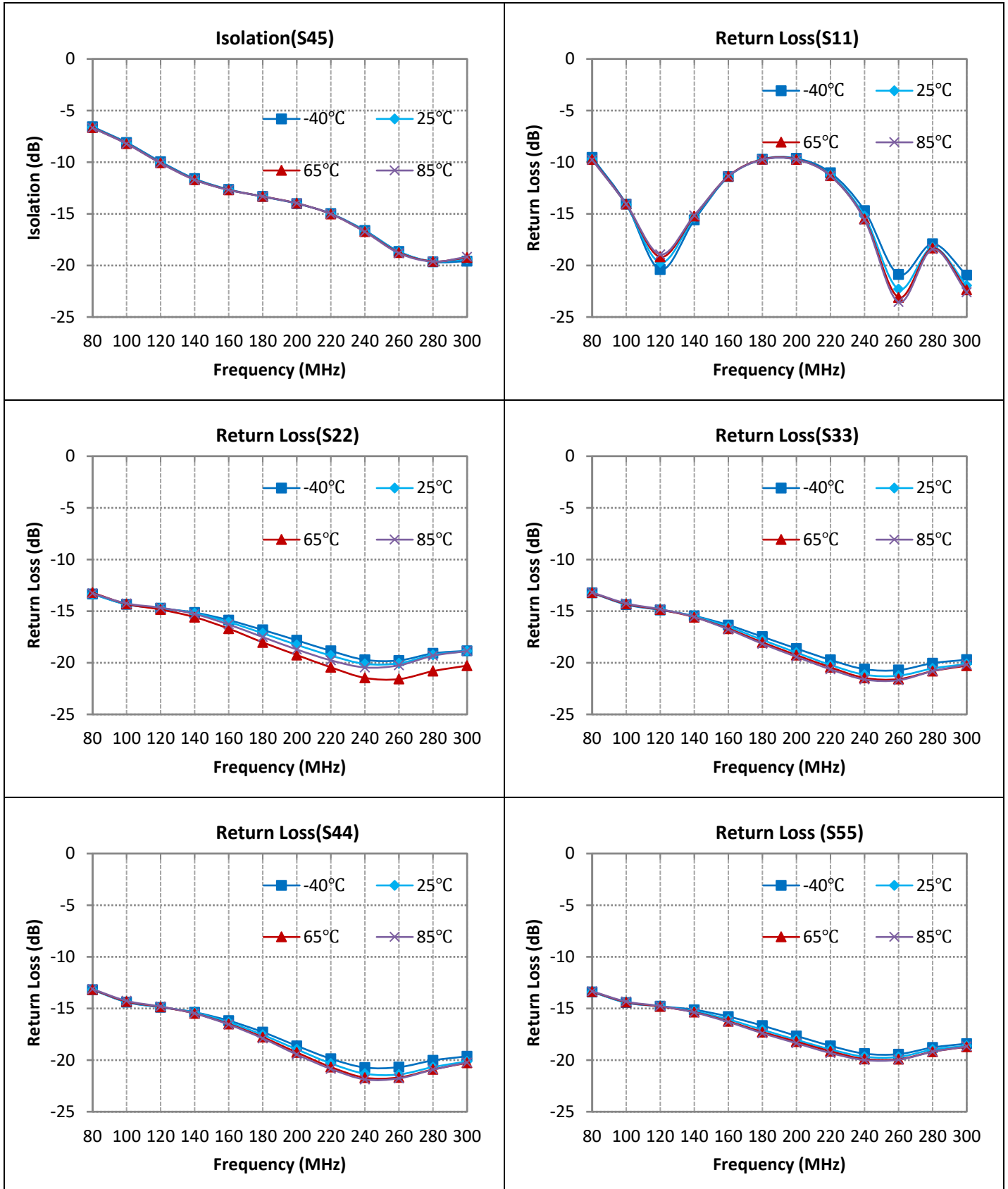
### Typical Performance Data T=25°C

Frequency (MHz)	Transmission Loss (dB)				IL (dB)	Amplitude Unbalance (dB)	Isolation (dB)			Return Loss (dB) (Input) (S11)	Return Loss (dB) (Output1) (S22)	Return Loss (dB) (Output2) (S33)	Return Loss (dB) (Output3) (S44)	Return Loss (dB) (Output4) (S55)	Phase (deg)				Phase Unbalance (dB)
	S21	S31	S41	S51			S23	S34	S45						S21	S31	S41	S51	
80	-6.87	-7.00	-7.03	-6.89	0.93	0.16	-6.64	-16.01	-6.63	-9.69	-13.35	-13.23	-13.19	-13.40	-66.03	-67.09	-66.88	-66.07	1.06
100	-6.57	-6.73	-6.71	-6.58	0.63	0.16	-8.18	-18.12	-8.17	-14.13	-14.34	-14.32	-14.36	-14.41	-86.28	-87.28	-87.37	-86.32	1.09
120	-6.45	-6.62	-6.64	-6.47	0.52	0.19	-10.03	-20.44	-10.04	-19.71	-14.72	-14.85	-14.87	-14.79	-107.49	-108.44	-108.85	-107.67	1.36
140	-6.55	-6.73	-6.78	-6.58	0.64	0.23	-11.66	-22.58	-11.67	-15.34	-15.21	-15.50	-15.40	-15.27	-129.26	-130.10	-130.31	-129.41	1.05
160	-6.81	-6.98	-7.01	-6.82	0.88	0.20	-12.64	-23.65	-12.68	-11.40	-16.06	-16.52	-16.35	-16.06	-150.64	-151.31	-151.40	-150.81	0.75
180	-7.06	-7.22	-7.22	-7.08	1.12	0.16	-13.26	-23.55	-13.33	-9.76	-17.14	-17.79	-17.56	-17.07	-171.38	-171.92	-172.11	-171.62	0.73
200	-7.17	-7.32	-7.32	-7.19	1.23	0.15	-13.91	-23.36	-14.00	-9.74	-18.27	-19.01	-18.97	-18.04	167.50	167.09	166.73	167.17	0.77
220	-7.14	-7.28	-7.29	-7.17	1.20	0.15	-14.88	-23.85	-15.00	-11.24	-19.31	-20.21	-20.33	-18.97	145.01	144.74	144.29	144.66	0.72
240	-7.04	-7.16	-7.19	-7.08	1.10	0.15	-16.52	-25.60	-16.66	-15.23	-20.11	-21.16	-21.32	-19.68	120.06	119.98	119.48	119.64	0.57
260	-7.03	-7.14	-7.18	-7.08	1.08	0.15	-18.52	-29.45	-18.70	-22.30	-20.05	-21.25	-21.39	-19.69	92.03	92.17	91.65	91.57	0.60
280	-7.20	-7.30	-7.33	-7.24	1.25	0.13	-19.48	-34.33	-19.61	-18.27	-19.24	-20.55	-20.67	-18.98	60.98	61.33	60.73	60.41	0.92
300	-7.49	-7.57	-7.61	-7.53	1.53	0.12	-19.49	-31.60	-19.37	-21.95	-18.87	-20.12	-20.14	-18.61	25.30	25.91	25.11	24.57	1.34

### Typical Electrical Characteristics (T=-40°C,25°C,65°C,85°C)



**Typical Electrical Characteristics (T=-40°C,25°C,65°C,85°C)**


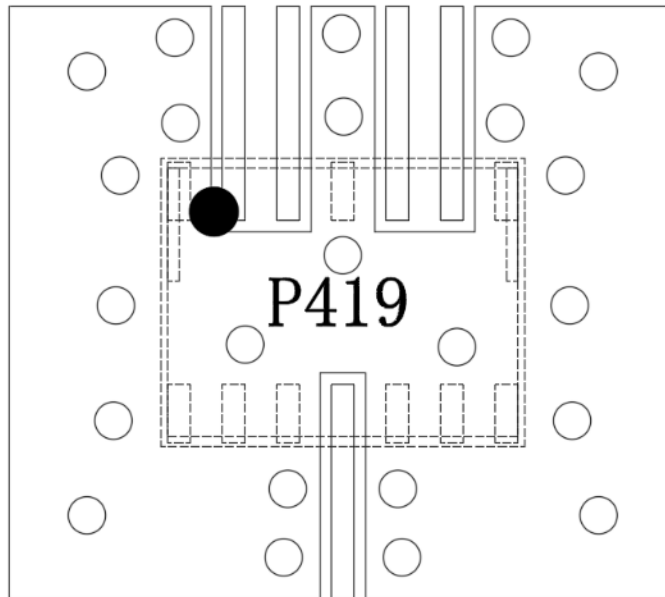
**Typical Electrical Characteristics (T=-40°C,25°C,65°C,85°C)**

**Yantel Corporation**

Add: No.308-322,3F,Building 1,Juchuang Jingu Innovation Park,Wenyuan Road 35,Xili Street,Nanshan,Shenzhen,China

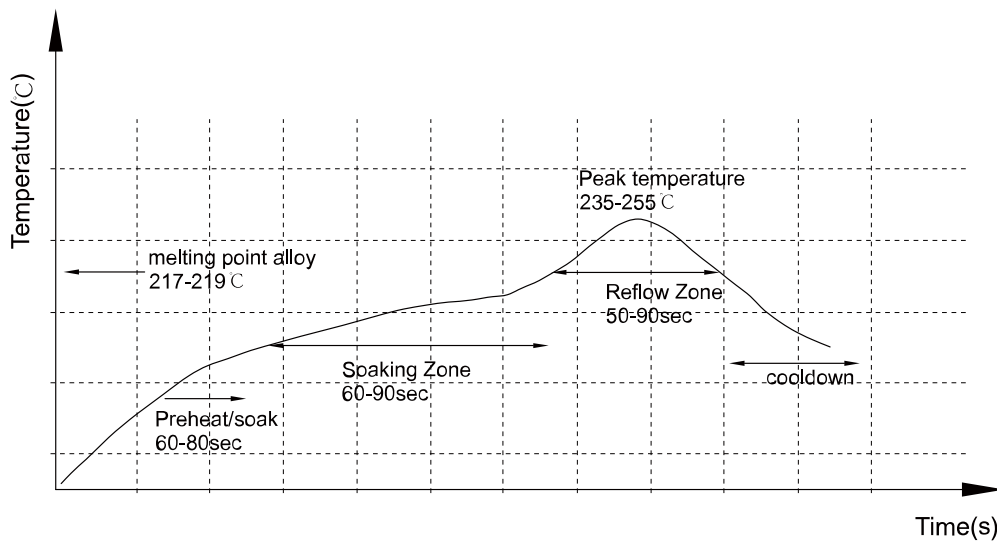
Tel: 86-755-8355-1886 Fax: 86-755-8355-2533

For detailed performance specs & shopping online see Yantel web site : [www.yantel-corp.com](http://www.yantel-corp.com)

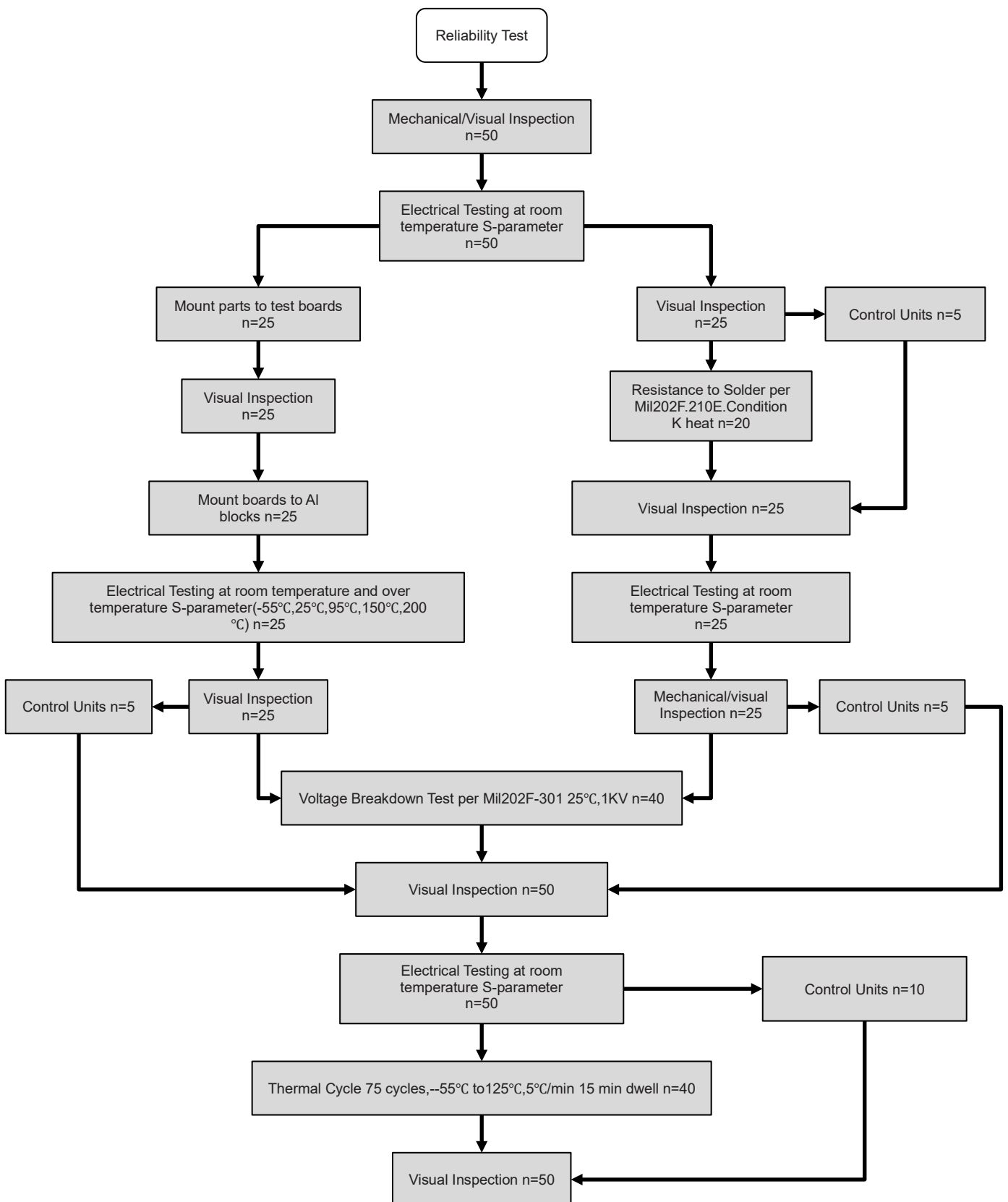
### Mounting Considerations



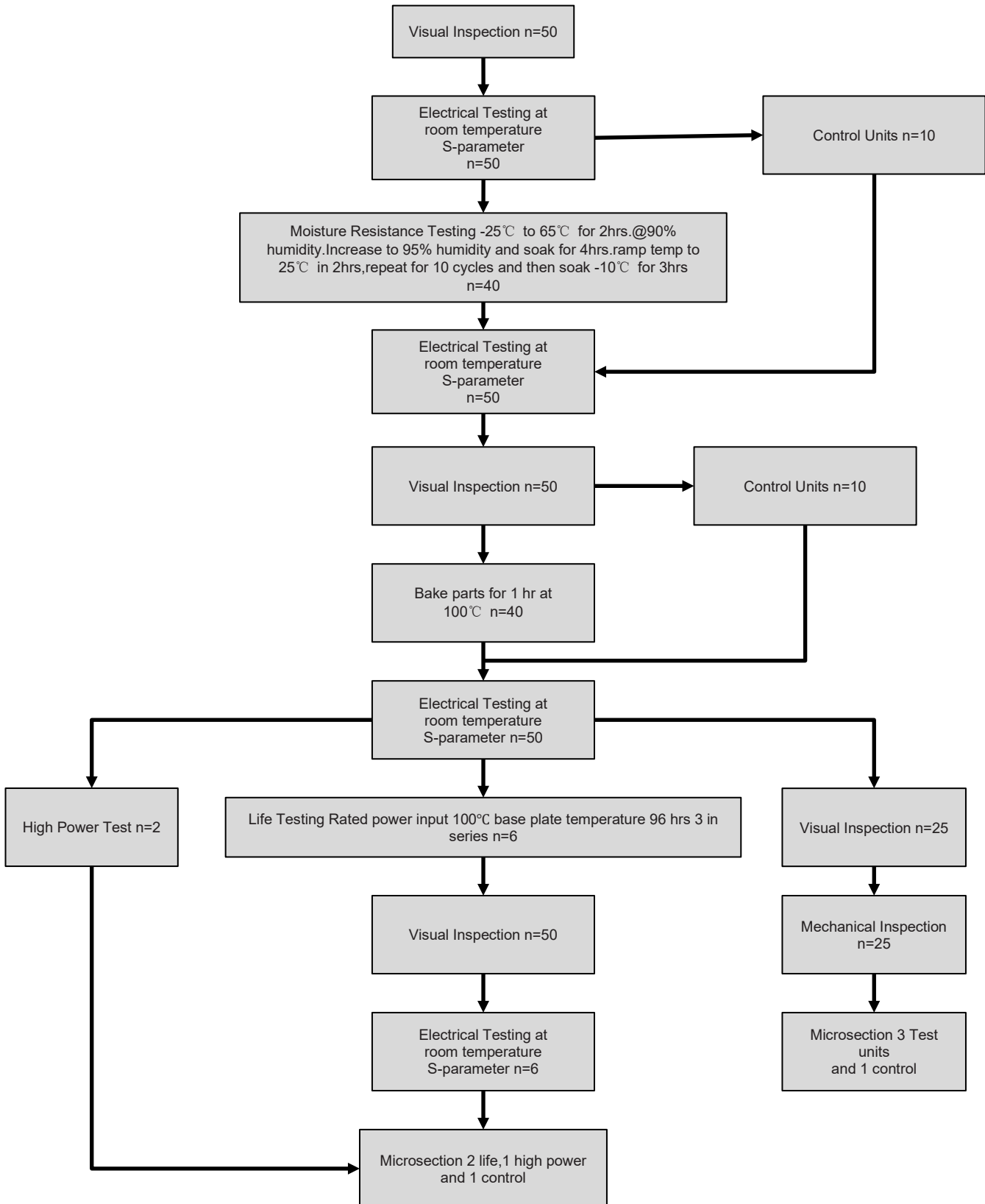
### Reflow Profile



### Reliability Test Flow



### Reliability Test Flow



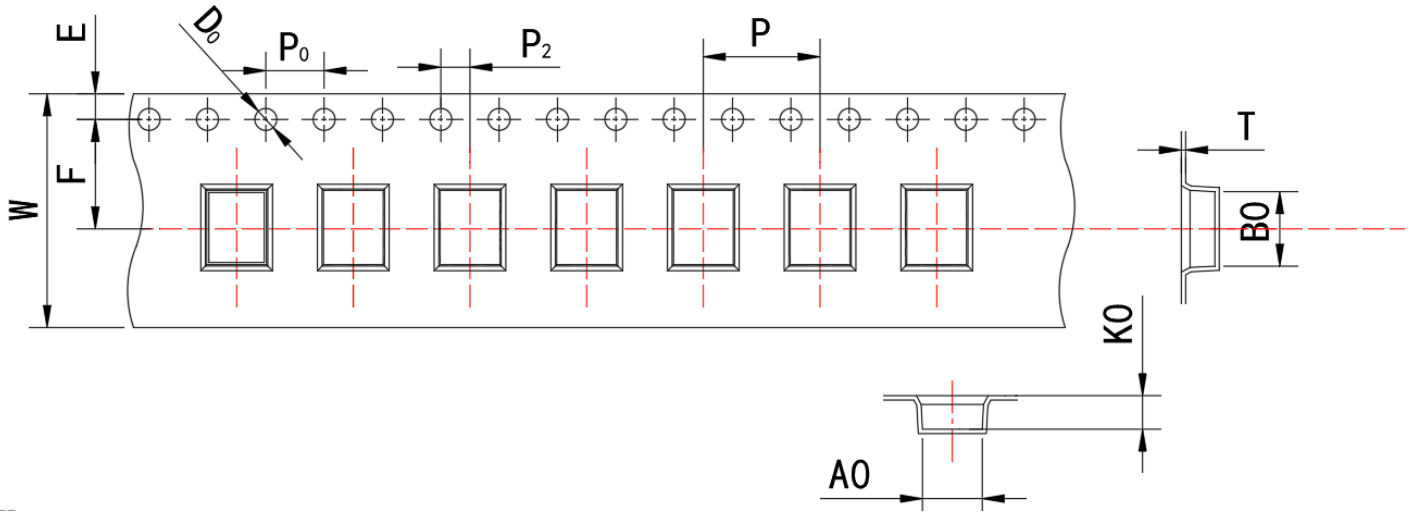
### Yantel Corporation

Add: No.308-322,3F,Building 1,Juchuang Jingu Innovation Park,Wenyuan Road 35,Xili Street,Nanshan,Shenzhen,China

Tel: 86-755-8355-1886 Fax: 86-755-8355-2533

For detailed performance specs & shopping online see Yantel web site : [www.yantel-corp.com](http://www.yantel-corp.com)

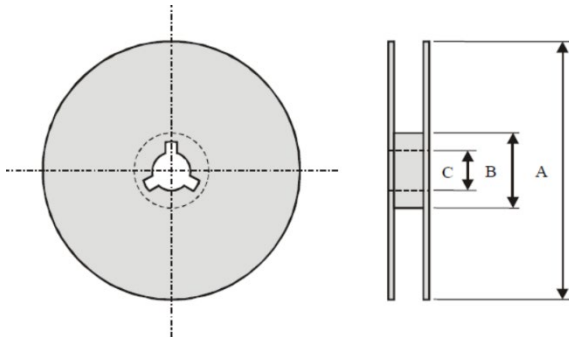
### Plastic Tape specifications (unit: mm)



Index	A0	B0	ØD	T	W	E	F	P	P0	P2
Dimension (mm)	4.1 ± 0.1	5.1 ± 0.1	1.50+01/0	0.3±0.05	16.0 ± 0.3	1.75 ± 0.1	7.50 ± 0.1	8.0 ± 0.1	4.0±0.1	2.00 ± 0.1
Index	K0									
Dimension (mm)	2.30±0.1									

#### NOTE :

- 10 sprocket hole pitch cumulative tolerance is ±0.20mm.
- 1mm maximum camber in 100mm long for carrier.
- K0 be mesured from the top carrier surface to the bottom surface inside the tape pocket.
- All dimension scopes are in term of EIA-481-C STANDARD.
- Material: Transparent Anti-static Polystyrence.



Index	A	B	C
Dimension (mm)	Ø178.0	Ø60.0	Ø13.2

Taping Quantity:1200 pieces per 7" reel

### Yantel Corporation

Add: No.308-322,3F,Building 1,Juchuang Jingu Innovation Park,Wenyuan Road 35,Xili Street,Nanshan,Shenzhen,China

Tel: 86-755-8355-1886 Fax: 86-755-8355-2533

For detailed performance specs & shopping online see Yantel web site : [www.yantel-corp.com](http://www.yantel-corp.com)