

Description

Yantel's 2-10GHz 2-way power divider / combiner offers unmatched size and performance in a surface mount configuration. This power divider utilizes Yantel's low loss temperature stable materials which offer small size and minimal performance variation over temperature.

Features

- Small Size
- Frequency Stable over Temperature
- Solder Surface Mount Package
- Excellent Repeatability
- Moisture Sensitivity Level: MSL1
- Operating & Storage Temp: -55°C to +125°C
- Characteristic Impedance: 50Ω

Specifications

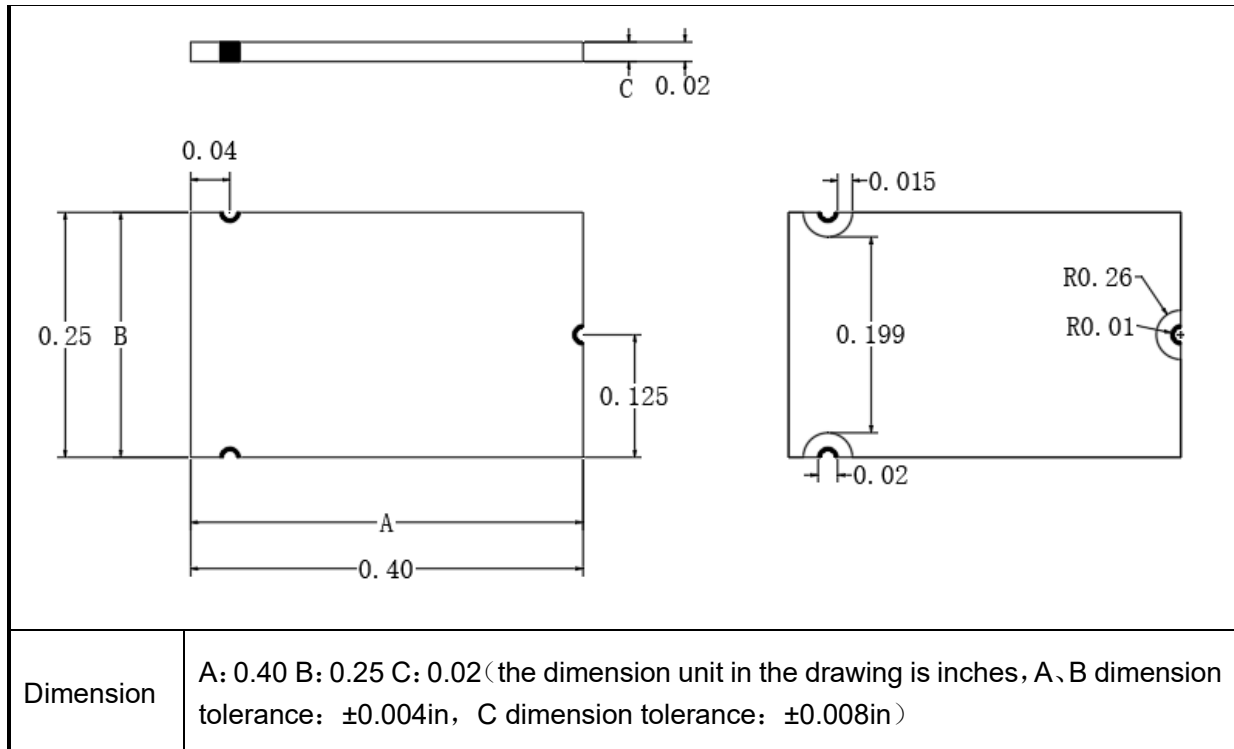
Parameter	Min	Typ.	Max	Units
Frequency Range	2	-	10	GHz
Insertion Loss	-	-	3.0	dB
Isolation	15	-	-	dB
Input VSWR		-	1.8	
Output VSWR		-	1.5	
Amplitude Balance		-	0.3	dB
Phase Balance		-	3	°
Power	1			W
Impedance	50			Ω
Size	0.4*0.25*0.5			inches

Operating & Storage Condition (Component)

Operation Temperature Range: -40°C~+85°C

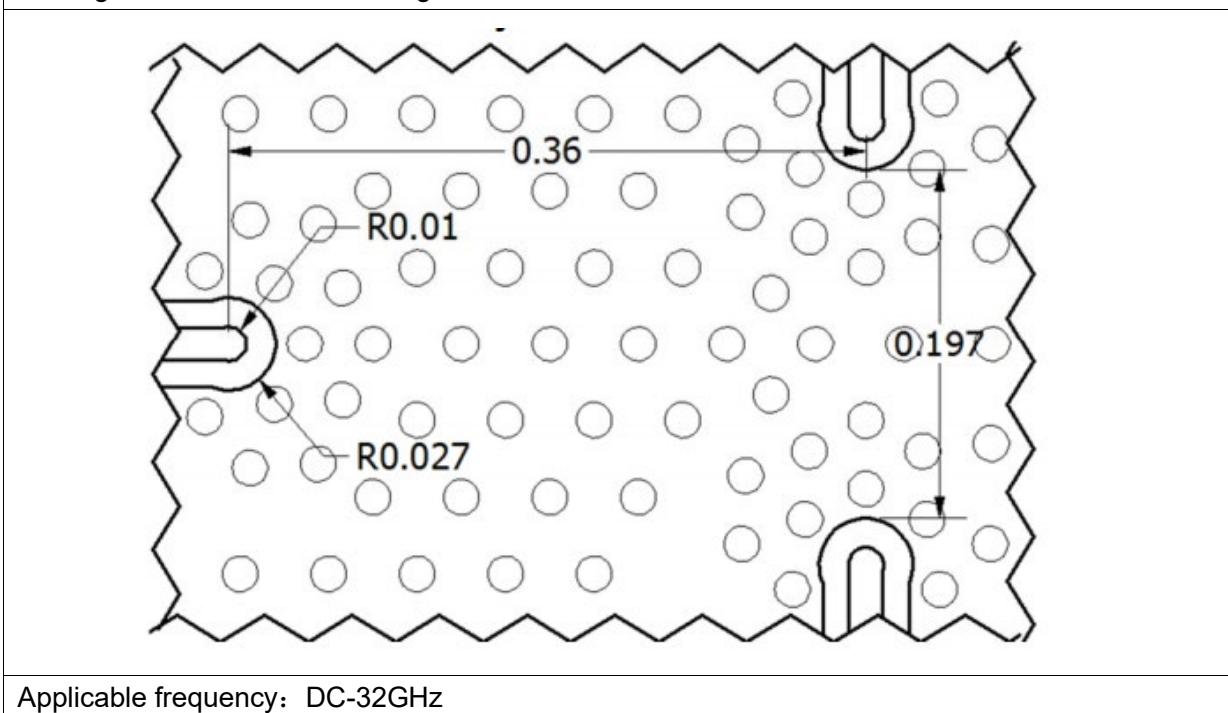
Storage Temperature Range: -55°C~+125°C

Construction&Dimensions (unit =inches)



Recommended PCB Layout

Testing Substrate material is Rogers4350, thickness is 10mil



Test Curve
